

For Research Use Only

# CoraLite®594-conjugated Cytokeratin 5 Monoclonal antibody



Catalog Number:CL594-66727

## Basic Information

<b>Catalog Number:</b> CL594-66727	<b>GenBank Accession Number:</b> BC024292	<b>Purification Method:</b> Protein G purification
<b>Size:</b> 100ul , Concentration: 1000 µg/ml by Nanodrop;	<b>GeneID (NCBI):</b> 3852	<b>CloneNo.:</b> 1A1C5
<b>Source:</b> Mouse	<b>Full Name:</b> keratin 5	<b>Recommended Dilutions:</b> IF 1:50-1:500
<b>Isotype:</b> IgG1	<b>Calculated MW:</b> 590 aa, 62 kDa	<b>Excitation/Emission maxima wavelengths:</b> 593 nm / 614 nm
<b>Immunogen Catalog Number:</b> AG24184		

## Applications

<b>Tested Applications:</b> IF	<b>Positive Controls:</b> IF : human oesophagus cancer tissue,
<b>Species Specificity:</b> Human, mouse, pig	

## Background Information

Keratins are a large family of proteins that form the intermediate filament cytoskeleton of epithelial cells. Keratin expression is highly regulated, tissue specific, and varies according to cell-state. Type I keratins consist of acidic, low molecular weight proteins with MW ranging from 40 kDa (KRT19) to 64 kDa (KRT9). Type 2 keratins consist of basic or neutral, high molecular weight proteins with MW from 52 kDa (KRT8) to 67 kDa (KRT18). Keratin 5, one 58-kD type II keratin, is coexpressed with a 50-kD keratin 14 in stratified squamous epithelia. Keratin 5, one 58-kD type II keratin, is coexpressed with a 50-kD tyK14 in stratified squamous epithelia.

## Storage

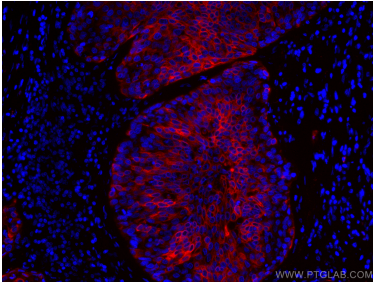
**Storage:**  
Store at -20°C. Avoid exposure to light.  
**Storage Buffer:**  
PBS with 50% Glycerol, 0.05% Proclin300, 0.5% BSA, pH 7.3.  
Aliquoting is unnecessary for -20°C storage

\*\*\* 20ul sizes contain 0.1% BSA

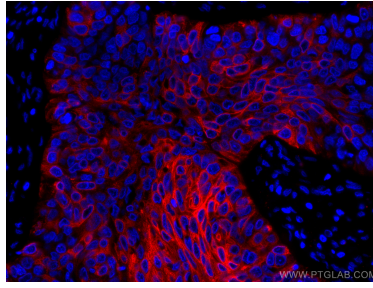
For technical support and original validation data for this product please contact:  
T: 1 (888) 4PTGLAB (1-888-478-4522) (toll free in USA), or 1(312) 455-8498 (outside USA)  
E: proteintech@ptglab.com  
W: ptglab.com

This product is exclusively available under Proteintech Group brand and is not available to purchase from any other manufacturer.

## Selected Validation Data



Immunofluorescent analysis of (4% PFA) fixed human oesophagus cancer tissue using CoraLite®594 Cytokeratin 5 antibody (CL594-66727, Clone: 1A1C5 ) at dilution of 1:200.



Immunofluorescent analysis of (4% PFA) fixed human oesophagus cancer tissue using CoraLite®594 Cytokeratin 5 antibody (CL594-66727, Clone: 1A1C5 ) at dilution of 1:200.