

For Research Use Only

CoraLite®594-conjugated TSH Beta Monoclonal antibody



Catalog Number:CL594-66750

Basic Information

Catalog Number: CL594-66750	GenBank Accession Number: BC069298	Purification Method: Protein A purification
Size: 100ul , Concentration: 1000 µg/ml by Nanodrop;	GeneID (NCBI): 7252	CloneNo.: 2G1H3
Source: Mouse	Full Name: thyroid stimulating hormone, beta	Recommended Dilutions: IF 1:50-1:500
Isotype: IgG2b	Calculated MW: 138 aa, 16 kDa	Excitation/Emission maxima wavelengths: 593 nm / 614 nm
Immunogen Catalog Number: AG27153		

Applications

Tested Applications: IF	Positive Controls: IF : human pituitary tissue,
Species Specificity: Human	

Background Information

Storage

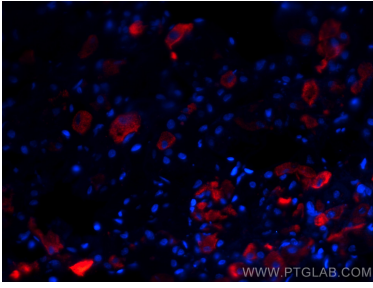
Storage:
Store at -20°C. Avoid exposure to light.
Storage Buffer:
PBS with 50% Glycerol, 0.05% Proclin300, 0.5% BSA, pH 7.3.
Aliquoting is unnecessary for -20°C storage

*** 20ul sizes contain 0.1% BSA

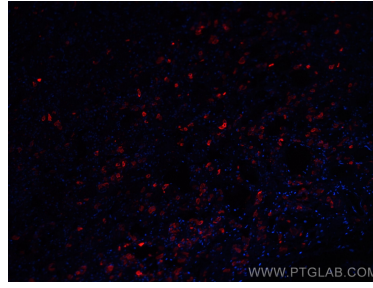
For technical support and original validation data for this product please contact:
T: 1 (888) 4PTGLAB (1-888-478-4522) (toll free in USA), or 1(312) 455-8498 (outside USA)
E: proteintech@ptglab.com
W: ptglab.com

This product is exclusively available under Proteintech Group brand and is not available to purchase from any other manufacturer.

Selected Validation Data



Immunofluorescent analysis of (4% PFA) fixed human pituitary tissue using CoraLite®594 TSH Beta antibody (CL594-66750, Clone: 2G1H3) at dilution of 1:200.



Immunofluorescent analysis of (4% PFA) fixed human pituitary tissue using CoraLite®594 TSH Beta antibody (CL594-66750, Clone: 2G1H3) at dilution of 1:200.