

For Research Use Only

# CoraLite®594-conjugated PSMB8 Monoclonal antibody

Catalog Number:CL594-66759



## Basic Information

### Catalog Number:

CL594-66759

### Size:

100ul , Concentration: 1000 ug/ml by Nanodrop;

### Source:

Mouse

### Isotype:

IgG1

### Immunogen Catalog Number:

AG6780

### GenBank Accession Number:

BC001114

### GeneID (NCBI):

5696

### UNIPROT ID:

P28062

### Full Name:

proteasome (prosome, macropain) subunit, beta type, 8 (large multifunctional peptidase 7)

### Calculated MW:

30 kDa

### Observed MW:

23 kDa

### Purification Method:

Protein G purification

### CloneNo.:

2A5B6

### Recommended Dilutions:

IF-P 1:50-1:500

IF/ICC 1:50-1:500

### Excitation/Emission maxima wavelengths:

588 nm / 604 nm

## Applications

### Tested Applications:

IF/ICC, IF-P, FC (Intra)

### Species Specificity:

human, mouse

### Positive Controls:

IF-P : human liver cancer tissue,

IF/ICC : C2C12 cells, human liver cancer tissue, HeLa cells

## Background Information

PSMB8(Proteasome subunit beta type-8) is also named as LMP7, PSMB5i, RING10, Y2 and belongs to the peptidase T1B family. The gene encodes the chymotrypsin-like catalytic subunit of the immunoproteasome(PMID: 19525961). PSMB8 has a role in controlling pathogenic immune responses and may be a target in autoimmune disorders. Its prosequence is not essential for incorporation of PSMB8 into the maturing proteasome, but it increased the efficiency of PSMB8 incorporation and proteasome maturation(PMID: 10926487). The pro-PSMB8 is a 276aa protein with the molecular mass of 30 kDa, and the mature form is about 23kDa due to the 72aa propeptide cleaved. Defects in PSMB8 are the cause of Nakajo syndrome (NKJO).

## Storage

### Storage:

Store at -20°C. Avoid exposure to light. Stable for one year after shipment.

### Storage Buffer:

PBS with 50% Glycerol, 0.05% Proclin300, 0.5% BSA, pH 7.3.

Aliquoting is unnecessary for -20°C storage

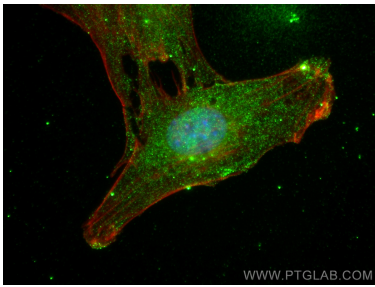
For technical support and original validation data for this product please contact:

T: 1 (888) 4PTGLAB (1-888-478-4522) (toll free in USA), or 1(312) 455-8498 (outside USA)

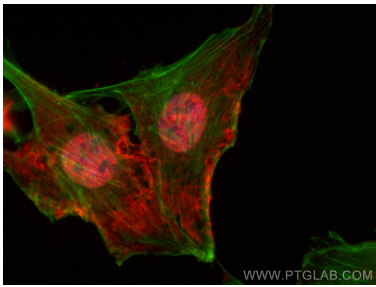
E: [proteintech@ptglab.com](mailto:proteintech@ptglab.com)  
W: [ptglab.com](http://ptglab.com)

This product is exclusively available under Proteintech Group brand and is not available to purchase from any other manufacturer.

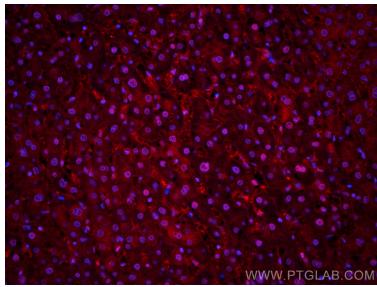
Selected Validation Data



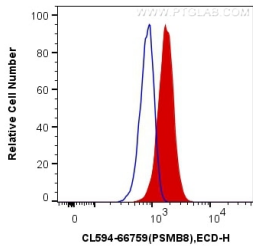
N/A



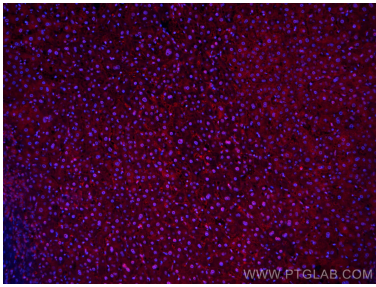
Immunofluorescent analysis of (4% PFA) fixed C2C12 cells using CoraLite®594 PSMB8 antibody (CL594-66759, Clone: 2A5B6 ) at dilution of 1:200, CL488-phalloidin (blue).



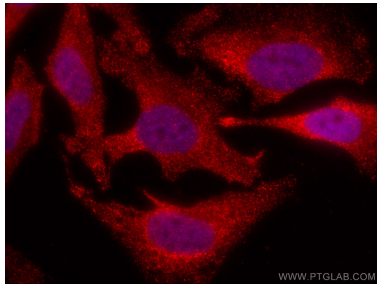
Immunofluorescent analysis of (4% PFA) fixed human liver cancer tissue using CoraLite®594 PSMB8 antibody (CL594-66759, Clone: 2A5B6 ) at dilution of 1:200.



1X10<sup>6</sup> HeLa cells were intracellularly stained with 0.4 ug CoraLite®594 Anti-Human PSMB8 (CL594-66759, Clone:2A5B6) (red), or 0.4 ug Control Antibody. Cells were fixed and permeabilized with Transcription Factor Staining Buffer Kit (PF00011).



Immunofluorescent analysis of (4% PFA) fixed human liver cancer tissue using CoraLite®594 PSMB8 antibody (CL594-66759, Clone: 2A5B6 ) at dilution of 1:200.



Immunofluorescent analysis of (4% PFA) fixed HeLa cells using CoraLite®594 PSMB8 antibody (CL594-66759, Clone: 2A5B6 ) at dilution of 1:200.