

For Research Use Only

CoraLite®594-conjugated MFN1 Monoclonal antibody

Catalog Number:CL594-66776



Basic Information

Catalog Number:

CL594-66776

Size:

100ul , Concentration: 1000 ug/ml by Nanodrop;

Source:

Mouse

Isotype:

IgG2a

Immunogen Catalog Number:

AG4890

GenBank Accession Number:

BC040557

GeneID (NCBI):

55669

UNIPROT ID:

Q8IWA4

Full Name:

mitofusin 1

Calculated MW:

741 aa, 84 kDa

Observed MW:

84 kDa

Purification Method:

Protein A purification

CloneNo.:

3F11C11

Recommended Dilutions:

IF/ICC 1:50-1:500

Excitation/Emission maxima wavelengths:

588 nm / 604 nm

Applications

Tested Applications:

IF/ICC, FC (Intra)

Species Specificity:

human

Positive Controls:

IF/ICC : HepG2 cells, T-47D cells

Background Information

Mitofusin-1 (MFN1) is a mediator of mitochondrial fusion. This protein and mitofusin 2 are homologs of the Drosophila protein fuzzy onion (Fzo). Mitofusins are large predicted GTPases located in outer mitochondrial membrane. They are essential for outer membrane fusion by interacting with each other to facilitate mitochondrial targeting. The mitofusins are the first known protein mediator of mitochondrial fusion, and mediate developmentally regulated post-meiotic fusion of mitochondria. Mitofusin 1 and mitofusin 2 are ubiquitinated in a PINK1/parkin-dependent manner upon induction of mitophagy(PMID: 20871098).

Storage

Storage:

Store at -20°C. Avoid exposure to light. Stable for one year after shipment.

Storage Buffer:

PBS with 50% Glycerol, 0.05% Proclin300, 0.5% BSA, pH 7.3.

Aliquoting is unnecessary for -20°C storage

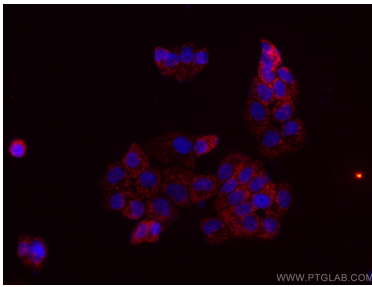
For technical support and original validation data for this product please contact:

T: 1 (888) 4PTGLAB (1-888-478-4522) (toll free in USA), or 1(312) 455-8498 (outside USA)

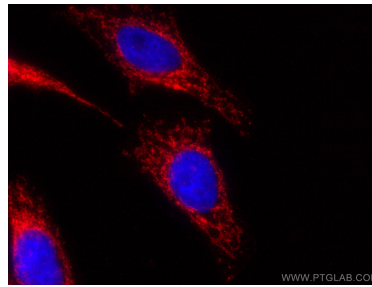
E: proteintech@ptglab.com
W: ptglab.com

This product is exclusively available under Proteintech Group brand and is not available to purchase from any other manufacturer.

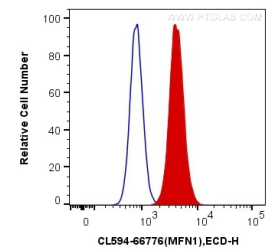
Selected Validation Data



Immunofluorescent analysis of (4% PFA) fixed T-47D cells using CoraLite®594-conjugated MFN1 antibody (CL594-66776, Clone: 3F11C11) at dilution of 1:100.



Immunofluorescent analysis of (4% PFA) fixed HepG2 cells using CoraLite®594 MFN1 antibody (CL594-66776, Clone: 3F11C11) at dilution of 1:200.



1X10⁶ HepG2 cells were intracellularly stained with 0.4 ug CoraLite®594 Anti-Human MFN1 (CL594-66776, Clone:3F11C11) (red), or 0.4 ug Mouse IgG2a Isotype Control (CL594-66360-2, Clone: K11A1B2A2) (blue). Cells were fixed with 4% PFA and permeabilized with Flow Cytometry Perm Buffer (PF00011-C).