

For Research Use Only

CoraLite®594-conjugated S100A8 Monoclonal antibody

Catalog Number:CL594-66853



Basic Information

Catalog Number: CL594-66853	GenBank Accession Number: BC005928	Purification Method: Protein A purification
Size: 100ul , Concentration: 1000 ug/ml by Nanodrop;	GeneID (NCBI): 6279	CloneNo.: 1G11C8
Source: Mouse	UNIPROT ID: P05109	Recommended Dilutions: IF-P 1:50-1:500
Isotype: IgG2a	Full Name: S100 calcium binding protein A8	Excitation/Emission maxima wavelengths: 588 nm / 604 nm
Immunogen Catalog Number: AG8517	Calculated MW: 93 aa, 11 kDa	

Applications

Tested Applications: IF-P	Positive Controls: IF-P : human tonsillitis tissue,
Species Specificity: Human	

Background Information

S100A8 is a member of the S100 family of proteins containing 2 EF-hand calcium-binding motifs. S100 proteins are localized in the cytoplasm and/or nucleus of a wide range of cells, and involved in the regulation of a number of cellular processes such as cell cycle progression and differentiation. S100 genes include at least 13 members which are located as a cluster on chromosome 1q21. This protein may function in the inhibition of casein kinase and as a cytokine.

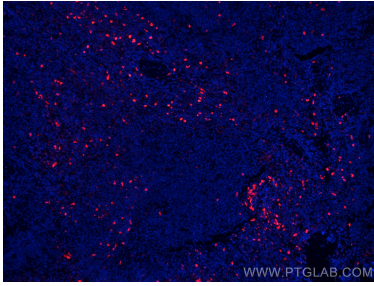
Storage

Storage:
Store at -20°C. Avoid exposure to light. Stable for one year after shipment.
Storage Buffer:
PBS with 50% Glycerol, 0.05% Proclin300, 0.5% BSA, pH 7.3.
Aliquoting is unnecessary for -20° C storage

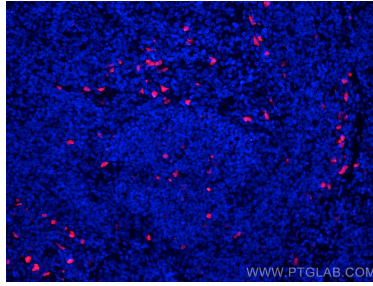
For technical support and original validation data for this product please contact:
T: 1 (888) 4PTGLAB (1-888-478-4522) (toll free in USA), or 1(312) 455-8498 (outside USA)
E: proteintech@ptglab.com
W: ptglab.com

This product is exclusively available under Proteintech Group brand and is not available to purchase from any other manufacturer.

Selected Validation Data



Immunofluorescent analysis of (4% PFA) fixed human tonsillitis tissue using CoraLite®594 S100A8 antibody (CL594-66853, Clone: 1G11C8) at dilution of 1:200.



Immunofluorescent analysis of (4% PFA) fixed human tonsillitis tissue using CoraLite®594 S100A8 antibody (CL594-66853, Clone: 1G11C8) at dilution of 1:200.