

For Research Use Only

CoraLite®594-conjugated CD8a Monoclonal antibody

Catalog Number:CL594-66868



Basic Information

Catalog Number:

CL594-66868

Size:

100ul , Concentration: 1000 ug/ml by Nanodrop;

Source:

Mouse

Isotype:

IgG1

Immunogen Catalog Number:

AG11111

GenBank Accession Number:

BC025715

GeneID (NCBI):

925

ENSEMBL Gene ID:

ENSG00000153563

UNIPROT ID:

P01732

Full Name:

CD8a molecule

Calculated MW:

235 aa, 26 kDa

Purification Method:

Protein G purification

CloneNo.:

1G2B10

Recommended Dilutions:

IF-P 1:50-1:500

Excitation/Emission maxima wavelengths:

588 nm / 604 nm

Applications

Tested Applications:

IF-P

Species Specificity:

human

Positive Controls:

IF-P : human appendicitis tissue, human tonsillitis tissue, human colon cancer tissue

Background Information

CD8 is a transmembrane glycoprotein that is predominantly expressed on the surface of cytotoxic T cells, and can also be found on natural killer cells, cortical thymocytes, and dendritic cells. CD8 serves as a co-receptor for the T cell receptor (TCR). Both CD8 and TCR recognize antigens displayed by an antigen presenting cell (APC) in the context of class I MHC molecules. CD8 plays a role in T cell development and activation of mature T cells. This antibody is raised against 23-183 aa of human CD8a, the alpha chain of CD8 molecule.

Storage

Storage:

Store at -20°C. Avoid exposure to light. Stable for one year after shipment.

Storage Buffer:

PBS with 50% Glycerol, 0.05% Proclin300, 0.5% BSA, pH 7.3.

Aliquoting is unnecessary for -20°C storage

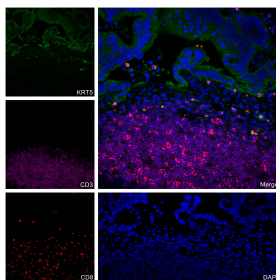
For technical support and original validation data for this product please contact:

T: 1 (888) 4PTGLAB (1-888-478-4522) (toll free in USA), or 1(312) 455-8498 (outside USA)

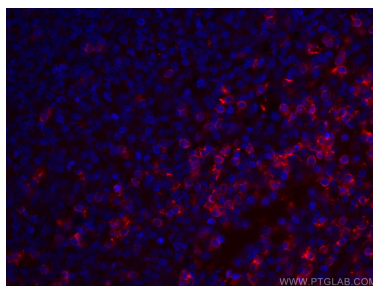
E: proteintech@ptglab.com
W: ptglab.com

This product is exclusively available under Proteintech Group brand and is not available to purchase from any other manufacturer.

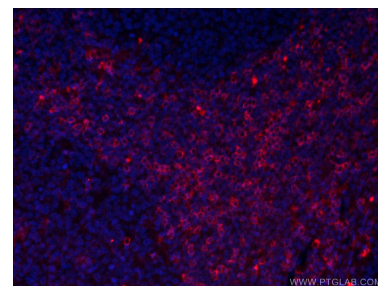
Selected Validation Data



Immunofluorescent analysis of (4% PFA) fixed human colon cancer tissue using CoraLite® 594 CD8a antibody (CL594-66868, Clone: 1G2B10) at dilution of 1:200, CoraLite® Plus 488 pan-keratin antibody (CL488-26411, green), CoraLite® Plus 647 CD3 antibody (CL647-60181, Clone: 3F3A1, Magenta).



Immunofluorescent analysis of (4% PFA) fixed human tonsillitis tissue using CoraLite® 594 CD8a antibody (CL594-66868, Clone: 1G2B10) at dilution of 1:400. DAPI (blue).



Immunofluorescent analysis of (4% PFA) fixed human tonsillitis tissue using CL594-66868 (CD8a antibody) at dilution of 1:50.