

For Research Use Only

# CoraLite®594-conjugated Annexin A10 Monoclonal antibody



Catalog Number:CL594-66869

## Basic Information

<b>Catalog Number:</b> CL594-66869	<b>GenBank Accession Number:</b> BC007320	<b>Purification Method:</b> Protein A purification
<b>Size:</b> 100ul , Concentration: 1000 µg/ml by Nanodrop;	<b>GeneID (NCBI):</b> 11199	<b>CloneNo.:</b> 1A7A11
<b>Source:</b> Mouse	<b>Full Name:</b> annexin A10	<b>Recommended Dilutions:</b> IF 1:50-1:500
<b>Isotype:</b> IgG2a	<b>Calculated MW:</b> 37 kDa	<b>Excitation/Emission maxima wavelengths:</b> 593 nm / 614 nm
<b>Immunogen Catalog Number:</b> AG27098	<b>Observed MW:</b> 37 kDa	

## Applications

**Tested Applications:**

IF

**Species Specificity:**

Human, pig, mouse

**Positive Controls:**

IF : human colon cancer tissue,

## Background Information

ANXA10, member of the Annexin family, is a calcium-and-phospholipid-binding protein. It is implicated in multiple physiological processes, including growth regulation, cell division, apoptosis, and differentiation. ANXA10 was recently observed to be upregulated in Barrett's esophagus, oral cancers, pancreatic cancer and colon cancer.

## Storage

**Storage:**

Store at -20°C. Avoid exposure to light.

**Storage Buffer:**

PBS with 50% Glycerol, 0.05% Proclin300, 0.5% BSA, pH 7.3.

Aliquoting is unnecessary for -20°C storage

\*\*\* 20ul sizes contain 0.1% BSA

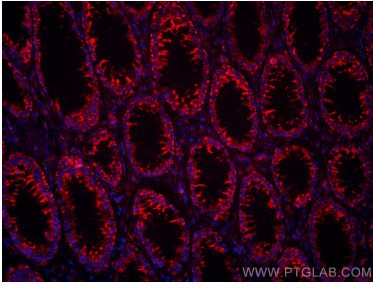
For technical support and original validation data for this product please contact:

T: 1 (888) 4PTGLAB (1-888-478-4522) (toll free in USA), or 1(312) 455-8498 (outside USA)

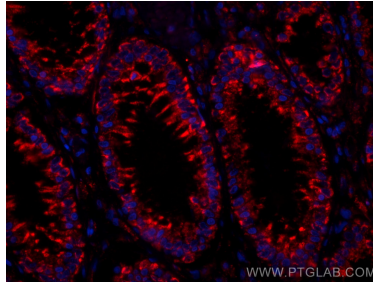
E: [proteintech@ptglab.com](mailto:proteintech@ptglab.com)  
W: [ptglab.com](http://ptglab.com)

This product is exclusively available under Proteintech Group brand and is not available to purchase from any other manufacturer.

## Selected Validation Data



Immunofluorescent analysis of (4% PFA) fixed human colon cancer tissue using CoraLite®594 Annexin A10 antibody (CL594-66869, Clone: 1A7A11) at dilution of 1:200.



Immunofluorescent analysis of (4% PFA) fixed human colon cancer tissue using CoraLite®594 Annexin A10 antibody (CL594-66869, Clone: 1A7A11) at dilution of 1:200.