

For Research Use Only

# CoraLite®594-conjugated SERPING1/C1 Inactivator Monoclonal antibody



Catalog Number: **CL594-66882**

## Basic Information

<b>Catalog Number:</b> CL594-66882	<b>GenBank Accession Number:</b> BC011171	<b>Purification Method:</b> Protein A purification
<b>Size:</b> 100ul , Concentration: 1000 µg/ml by Nanodrop;	<b>GeneID (NCBI):</b> 710	<b>CloneNo.:</b> 1B11B11
<b>Source:</b> Mouse	<b>Full Name:</b> serpin peptidase inhibitor, clade G (C1 inhibitor), member 1	<b>Recommended Dilutions:</b> IF 1:50-1:500
<b>Isotype:</b> IgG2a	<b>Calculated MW:</b> 500 aa, 55 kDa	<b>Excitation/Emission maxima wavelengths:</b> 594 nm / 615 nm
<b>Immunogen Catalog Number:</b> AG16782	<b>Observed MW:</b> 100 kDa	

## Applications

<b>Tested Applications:</b> IF	<b>Positive Controls:</b> IF : HeLa cells,
<b>Species Specificity:</b> Human, pig, rat	

## Background Information

SERPING1, also known as C1 Inhibitor (C1INH), is a member of the Serine proteinase inhibitor family. Its main function is the inhibition of the complement system to prevent spontaneous activation. It inhibits activated C1r and C1s of the first complement component and thus regulates complement activation. Deficiency of this protein is associated with hereditary angioneurotic oedema (HANE). C1INH is the most heavily glycosylated plasma protein.

## Storage

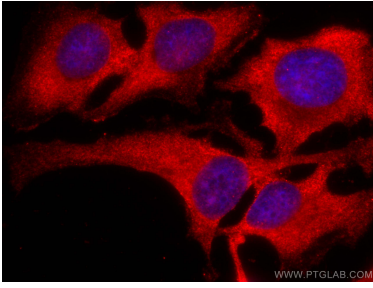
**Storage:**  
Store at -20°C. Avoid exposure to light. Stable for one year after shipment.  
**Storage Buffer:**  
PBS with 50% Glycerol, 0.05% Proclin300, 0.5% BSA, pH 7.3.  
Aliquoting is unnecessary for -20°C storage

\*\*\* 20ul sizes contain 0.1% BSA

For technical support and original validation data for this product please contact:  
T: 1 (888) 4PTGLAB (1-888-478-4522) (toll free in USA), or 1(312) 455-8498 (outside USA) E: [proteintech@ptglab.com](mailto:proteintech@ptglab.com) W: [ptglab.com](http://ptglab.com)

This product is exclusively available under Proteintech Group brand and is not available to purchase from any other manufacturer.

## Selected Validation Data



Immunofluorescent analysis of (-20°C Ethanol) fixed HeLa cells using CoraLite®594 SERPING1/C1 Inactivator antibody (CL594-66882, Clone: 1B11B11) at dilution of 1:200.