

For Research Use Only

CoraLite®594-conjugated ASF1A Monoclonal antibody



Catalog Number:CL594-66884

Basic Information

Catalog Number: CL594-66884	GenBank Accession Number: BC010878	Purification Method: Protein A purification
Size: 100ul , Concentration: 1000 µg/ml by Nanodrop;	GeneID (NCBI): 25842	CloneNo.: 2D4A6
Source: Mouse	Full Name: ASF1 anti-silencing function 1 homolog A (<i>S. cerevisiae</i>)	Recommended Dilutions: IF 1:50-1:500
Isotype: IgG3	Calculated MW: 204 aa, 23 kDa	Excitation/Emission maxima wavelengths: 593 nm / 614 nm
Immunogen Catalog Number: AG1233	Observed MW: 21-23 kDa	

Applications

Tested Applications: IF	Positive Controls: IF : HepG2 cells,
Species Specificity: Human, rat	

Background Information

Anti-silencing function 1, *S.cerevisiae*, homolog of A(ASF1A) is a histone chaperone that has a crucial role in the remodeling of chromatin structure during replication, DNA repair, and cellular senescence. It promotes chromatin assembly in replication-dependent manner by cooperation with chromatin assembly factor1(CAF-1), and cooperates with HIRA in replication-independent manner. It's required for the formation of senescence-associated heterochromatin foci(SAHF) and efficient senescence-associated cell cycle exit.

Storage

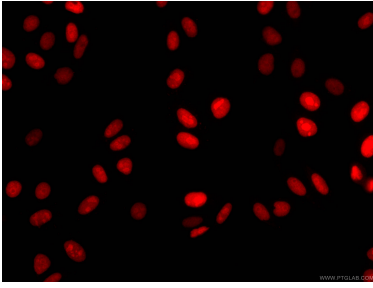
Storage:
Store at -20°C. Avoid exposure to light. Stable for one year after shipment.
Storage Buffer:
PBS with 50% Glycerol, 0.05% Proclin300, 0.5% BSA, pH 7.3.
Aliquoting is unnecessary for -20°C storage

*** 20ul sizes contain 0.1% BSA

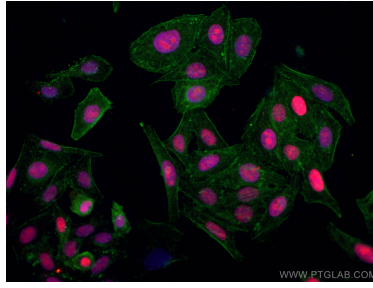
For technical support and original validation data for this product please contact:
T: 1 (888) 4PTGLAB (1-888-478-4522) (toll free in USA), or 1(312) 455-8498 (outside USA)
E: proteintech@ptglab.com
W: ptglab.com

This product is exclusively available under Proteintech Group brand and is not available to purchase from any other manufacturer.

Selected Validation Data



Immunofluorescent analysis of (4% PFA) fixed HepG2 cells using CL594-66884 (ASF1A antibody) at dilution of 1:100.



Immunofluorescent analysis of (4% PFA) fixed HepG2 cells using CoraLite®594-conjugated ASF1A antibody (CL594-66884, Clone: 2D4A6) at dilution of 1:100.