

For Research Use Only

CoraLite®594-conjugated DLC1 Monoclonal antibody



Catalog Number:CL594-66894

Basic Information

Catalog Number: CL594-66894	GenBank Accession Number: BC054511	Purification Method: Protein G purification
Size: 100ul , Concentration: 1000 µg/ml by Nanodrop;	GeneID (NCBI): 10395	CloneNo.: 1G10H12
Source: Mouse	Full Name: deleted in liver cancer 1	Recommended Dilutions: IF 1:50-1:500
Isotype: IgG1	Calculated MW: 171 kDa	Excitation/Emission maxima wavelengths: 594 nm / 615 nm
Immunogen Catalog Number: AG24404	Observed MW: 115 kDa	

Applications

Tested Applications: IF	Positive Controls: IF : A375 cells,
Species Specificity: Human	

Background Information

Deleted in Liver Cancer 1 (DLC1) is a RhoGAP-containing tumor suppressor that inhibits angiogenesis by repressing VEGF production in epithelial cells. DLC1 is often down-regulated in a variety of cancers, such as those of the liver, lung, breast, stomach, brain, colon and prostate due to either genomic deletion or aberrant DNA methylation.

Storage

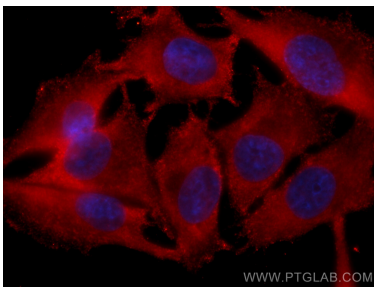
Storage:
Store at -20°C. Avoid exposure to light. Stable for one year after shipment.
Storage Buffer:
PBS with 50% Glycerol, 0.05% Proclin300, 0.5% BSA, pH 7.3.
Aliquoting is unnecessary for -20°C storage

*** 20ul sizes contain 0.1% BSA

For technical support and original validation data for this product please contact:
T: 1 (888) 4PTGLAB (1-888-478-4522) (toll free in USA), or 1(312) 455-8498 (outside USA) E: proteintech@ptglab.com W: ptglab.com

This product is exclusively available under Proteintech Group brand and is not available to purchase from any other manufacturer.

Selected Validation Data



Immunofluorescent analysis of (-20°C Methanol) fixed A375 cells using CoraLite®594 DLC1 antibody (CL594-66894, Clone: 1G10H12) at dilution of 1:200.