

For Research Use Only

# CoraLite®594-conjugated Alpha Actinin Monoclonal antibody

Catalog Number:CL594-66895



## Basic Information

Catalog Number:

CL594-66895

Size:

100ul , Concentration: 1000 ug/ml by 87

Nanodrop;

Source:

Mouse

Isotype:

IgG2b

Immunogen Catalog Number:

AG28383

GenBank Accession Number:

BC015766

GeneID (NCBI):

P12814

UNIPROT ID:

P12814

Full Name:

actinin, alpha 1

Calculated MW:

103 kDa

Observed MW:

100-105 kDa

Purification Method:

Protein A purification

CloneNo.:

1E2E1

Recommended Dilutions:

IF/ICC 1:50-1:500

Excitation/Emission maxima  
wavelengths:

588 nm / 604 nm

## Applications

Tested Applications:

IF/ICC

Species Specificity:

Human, rat, mouse

Positive Controls:

IF/ICC : C2C12 cells,

## Background Information

Alpha Actinins are highly conserved actin-binding proteins that form antiparallel homodimers with the actin-binding domains on each end of the molecule, allowing crosslinking of actin molecules. There are four alpha actinin isoforms identified: two ubiquitously expressed cytoskeletal isoforms (ACTN1 and ACTN4) and two striated muscle-specific sarcomeric isoforms (ACTN2 and ACTN3). ACTN1 is also alternatively spliced to form smooth muscle or brain specific isoforms. This antibody recognize endogenous ACTN1, while it may cross-react with ACTN2 and ACTN4.

## Storage

Storage:

Store at -20°C. Avoid exposure to light. Stable for one year after shipment.

Storage Buffer:

PBS with 50% Glycerol, 0.05% Proclin300, 0.5% BSA, pH 7.3.

Aliquoting is unnecessary for -20°C storage

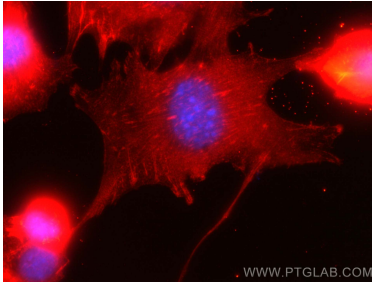
For technical support and original validation data for this product please contact:

T: 1 (888) 4PTGLAB (1-888-478-4522) (toll free  
in USA), or 1(312) 455-8498 (outside USA)

E: [proteintech@ptglab.com](mailto:proteintech@ptglab.com)  
W: [ptglab.com](http://ptglab.com)

This product is exclusively available under Proteintech Group brand and is not available to purchase from any other manufacturer.

## Selected Validation Data



Immunofluorescent analysis of (-20°C Methanol) fixed C2C12 cells using CoraLite®594 Alpha Actinin antibody (CL594-66895, Clone: 1E2E1 ) at dilution of 1:100.