

For Research Use Only

CoraLite®594-conjugated SPTLC1 Monoclonal antibody

Catalog Number:CL594-66899

Featured Product



Basic Information

Catalog Number:

CL594-66899

Size:

100ul , Concentration: 1000 ug/ml by Nanodrop;

Source:

Mouse

Isotype:

IgG1

Immunogen Catalog Number:

AG7876

GenBank Accession Number:

BC007085

GeneID (NCBI):

10558

UNIPROT ID:

O15269

Full Name:

serine palmitoyltransferase, long chain base subunit 1

Calculated MW:

53 kDa

Observed MW:

55 kDa

Purification Method:

Protein G purification

CloneNo.:

2D11D7

Recommended Dilutions:

IF/ICC 1:50-1:500

Excitation/Emission maxima wavelengths:

588 nm / 604 nm

Applications

Tested Applications:

IF/ICC

Species Specificity:

Human, mouse, rat

Positive Controls:

IF/ICC : HepG2 cells,

Background Information

SPTLC1 is a subunit of serine palmitoyltransferase (SPT) which is the key enzyme in sphingolipid biosynthesis and is essential for embryogenesis and cell survival. Mutations in the SPTLC1 gene (C133W, C133Y, V144D, and G387A) were reported to be responsible for the development of an inherited sensory neuropathy (hereditary sensory neuropathy type I, HSN1).

Storage

Storage:

Store at -20°C. Avoid exposure to light. Stable for one year after shipment.

Storage Buffer:

PBS with 50% Glycerol, 0.05% Proclin300, 0.5% BSA, pH 7.3.

Aliquoting is unnecessary for -20°C storage

For technical support and original validation data for this product please contact:

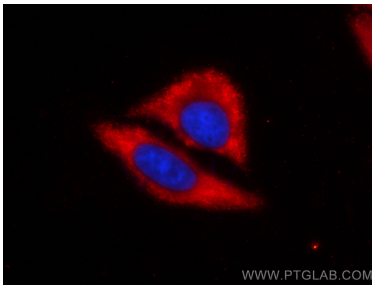
T: 1 (888) 4PTGLAB (1-888-478-4522) (toll free in USA), or 1(312) 455-8498 (outside USA)

E: proteintech@ptglab.com

W: ptglab.com

This product is exclusively available under Proteintech Group brand and is not available to purchase from any other manufacturer.

Selected Validation Data



Immunofluorescent analysis of (-20°C Ethanol) fixed HepG2 cells using Coralite®594 SPTLC1 antibody (CL594-66899, Clone: 2D11D7) at dilution of 1:200.