

For Research Use Only

# CoraLite®594-conjugated RACK1; GNB2L1 Monoclonal antibody



Catalog Number: CL594-66940

1 Publications

## Basic Information

<b>Catalog Number:</b> CL594-66940	<b>GenBank Accession Number:</b> BC019093	<b>Purification Method:</b> Protein A purification
<b>Size:</b> 100ul , Concentration: 1000 µg/ml by Nanodrop;	<b>GeneID (NCBI):</b> 10399	<b>CloneNo.:</b> 1E11A7
<b>Source:</b> Mouse	<b>Full Name:</b> guanine nucleotide binding protein (GIF 1:50-1:500 protein), beta polypeptide 2-like 1	<b>Recommended Dilutions:</b>
<b>Isotype:</b> IgG2a	<b>Calculated MW:</b> 36 kDa	<b>Excitation/Emission maxima wavelengths:</b> 588 nm / 604 nm
<b>Immunogen Catalog Number:</b> AG26708		

## Applications

<b>Tested Applications:</b> IF	<b>Positive Controls:</b> IF : HeLa cells,
<b>Cited Applications:</b> IF	
<b>Species Specificity:</b> Human	
<b>Cited Species:</b> mouse	

## Background Information

Members of the protein kinase C (PKC) family play a key regulatory role in a variety of cellular functions, including cell growth and differentiation, gene expression, hormone secretion and membrane function. RACK1 (receptor for activated protein kinase C 1), encoded by GNB2L1 gene, is a 317 amino acid guanine nucleotide-binding protein subunit beta-2-like 1 protein which is involved in the recruitment, assembly and/or regulation of a variety of signaling molecules, it contains 7 WD-repeats and is implicated in various protein interaction activities. RACK1 is a component of the 40S ribosomal subunit involved in translational repression. Recent finding suggests that RACK1 may be a new promising diagnosis biomarker and therapeutic target for non-small-cell lung cancer (NSCLC).

## Notable Publications

Author	Pubmed ID	Journal	Application
Jinrong Ran	37684678	Vet Res	IF

## Storage

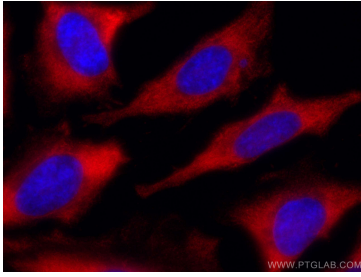
**Storage:**  
Store at -20°C. Avoid exposure to light. Stable for one year after shipment.  
**Storage Buffer:**  
PBS with 50% Glycerol, 0.05% Proclin300, 0.5% BSA, pH 7.3.  
**Aliquoting is unnecessary for -20°C storage**

\*\*\* 20ul sizes contain 0.1% BSA

For technical support and original validation data for this product please contact:  
T: 1 (888) 4PTGLAB (1-888-478-4522) (toll free in USA), or 1(312) 455-8498 (outside USA)  
E: proteintech@ptglab.com  
W: ptglab.com

This product is exclusively available under Proteintech Group brand and is not available to purchase from any other manufacturer.

## Selected Validation Data



Immunofluorescent analysis of (-20°C Methanol) fixed HeLa cells using Coralite@594 RACK1; GNB2L1 antibody (CL594-66940, Clone: 1E11A7) at dilution of 1:200.