

For Research Use Only

CoraLite® Plus 594-conjugated CAPN2 Monoclonal antibody

Catalog Number:CL594-66977



Basic Information

| | | |
|--|--|---|
| Catalog Number: CL594-66977 | GenBank Accession Number: BC021303 | Purification Method: Protein G purification |
| Size: 100ul , Concentration: 1000 ug/ml by Nanodrop; | GeneID (NCBI): 824 | CloneNo.: 1E1F10 |
| Source: Mouse | UNIPROT ID: P17655 | Recommended Dilutions: IF/ICC 1:50-1:500 |
| Isotype: IgG1 | Full Name: calpain 2, (m/II) large subunit | Excitation/Emission maxima wavelengths: 594 nm / 615 nm |
| Immunogen Catalog Number: AG28427 | Calculated MW: 700 aa, 80 kDa | |
| | Observed MW: 72-80 kDa | |

Applications

| | |
|--|--|
| Tested Applications: IF/ICC | Positive Controls: IF/ICC : HepG2 cells, |
| Species Specificity: human, mouse, rat | |

Background Information

Calpain 2(Calpain-2 catalytic subunit) is also named as CANPL2, CANPml, mCANP, FLJ39928 and belongs to the peptidase C2 family. N-terminal sequencing of CAPN2 purified from human liver indicates that the N-terminal methionine is removed, resulting in a mature 699-amino acid subunit with a calculated molecular mass of 79.9 kD(PMID:2852952). It is a calcium-regulated non-lysosomal thiol-protease which catalyzes limited proteolysis of substrates involved in cytoskeletal remodelling and signal transduction. It has 2 isoforms produced by alternative splicing with the molecular weight of 80 kDa and 71 kDa.

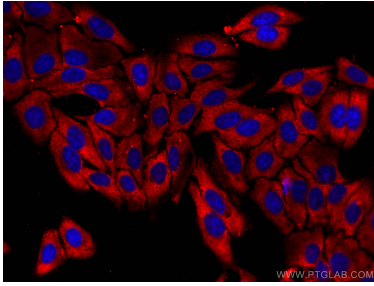
Storage

Storage:
Store at -20°C. Avoid exposure to light. Stable for one year after shipment.
Storage Buffer:
PBS with 50% Glycerol, 0.05% Proclin300, 0.5% BSA, pH 7.3.
Aliquoting is unnecessary for -20°C storage

For technical support and original validation data for this product please contact:
T: 1 (888) 4PTGLAB (1-888-478-4522) (toll free in USA), or 1(312) 455-8498 (outside USA)
E: proteintech@ptglab.com
W: ptglab.com

This product is exclusively available under Proteintech Group brand and is not available to purchase from any other manufacturer.

Selected Validation Data



Immunofluorescent analysis of (-20°C Ethanol) fixed HepG2 cells using CoraLite® Plus 594 CAPN2 antibody (CL594-66977, Clone: 1E1F10) at dilution of 1:200.