

For Research Use Only

CoraLite®594-conjugated ICAM4 Monoclonal antibody



Catalog Number:CL594-67014

Basic Information

Catalog Number: CL594-67014	GenBank Accession Number: BC029364	Purification Method: Protein G purification
Size: 100ul , Concentration: 1000 µg/ml by Nanodrop;	GeneID (NCBI): 3386	CloneNo.: 3A9B9
Source: Mouse	UNIPROT ID: Q14773	Recommended Dilutions: IF-P 1:50-1:500
Isotype: IgG1	Full Name: intercellular adhesion molecule 4 (Landsteiner-Wiener blood group)	Excitation/Emission maxima wavelengths: 588 nm / 604 nm
Immunogen Catalog Number: AG27628	Calculated MW: 271 aa, 29 kDa	
	Observed MW: 42 kDa	

Applications

Tested Applications: IF	Positive Controls: IF-P : mouse spleen tissue,
Species Specificity: Human, mouse	

Background Information

This gene encodes the Landsteiner-Wiener (LW) blood group antigen(s) that belongs to the immunoglobulin (Ig) superfamily, and that shares similarity with the intercellular adhesion molecule (ICAM) protein family. The protein migrate as a 42 kDa glycoprotein on SDS PAGE. Alternative splicing results in multiple transcript variants encoding distinct isoforms.

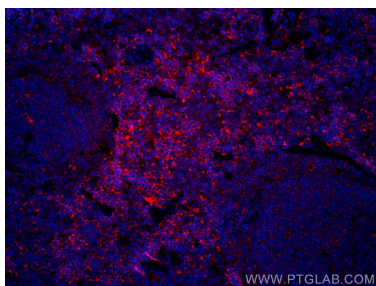
Storage

Storage:
Store at -20°C. Avoid exposure to light. Stable for one year after shipment.
Storage Buffer:
PBS with 50% Glycerol, 0.05% Proclin300, 0.5% BSA, pH 7.3.
Aliquoting is unnecessary for -20°C storage

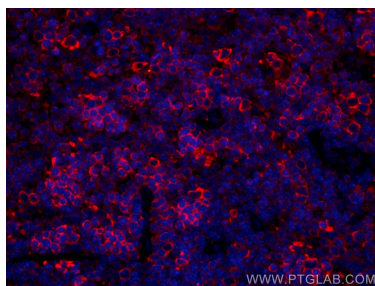
For technical support and original validation data for this product please contact:
T: 1 (888) 4PTGLAB (1-888-478-4522) (toll free in USA), or 1(312) 455-8498 (outside USA)
E: proteintech@ptglab.com
W: ptglab.com

This product is exclusively available under Proteintech Group brand and is not available to purchase from any other manufacturer.

Selected Validation Data



Immunofluorescent analysis of (4% PFA) fixed mouse spleen tissue using CoraLite®594 ICAM4 antibody (CL594-67014, Clone: 3A9B9) at dilution of 1:200.



Immunofluorescent analysis of (4% PFA) fixed mouse spleen tissue using CoraLite®594 ICAM4 antibody (CL594-67014, Clone: 3A9B9) at dilution of 1:200.