

For Research Use Only

CoraLite®594-conjugated MAP2 Monoclonal antibody



Catalog Number:CL594-67015

Basic Information

Catalog Number: CL594-67015	GenBank Accession Number: BC038857	Purification Method: Protein A purification
Size: 100ul , Concentration: 956 µg/ml by Nanodrop;	GeneID (NCBI): 4133	CloneNo.: 1C3E6
Source: Mouse	Full Name: microtubule-associated protein 2	Recommended Dilutions: IF 1:50-1:500
Isotype: IgG2b	Calculated MW: 200 kDa	Excitation/Emission maxima wavelengths: 588 nm / 604 nm
Immunogen Catalog Number: AG11349		

Applications

Tested Applications: FC (Intra), IF	Positive Controls: IF : rat brain tissue,
Species Specificity: Human, mouse, rat	

Background Information

MAP2 (microtubule-associated protein 2) is a cytoskeleton protein abundant in brain and has important role in neuronal morphogenesis. Multiple high molecular weight (MW) and low molecular weight (MW) MAP2 isoforms are expressed within axons, dendrites, and cell bodies. The expression of MAP2 is regulated in both a tissue- and developmentally specific manner. MAP2 antibodies have been widely used to mark the neuron or dendrite formation.

Storage

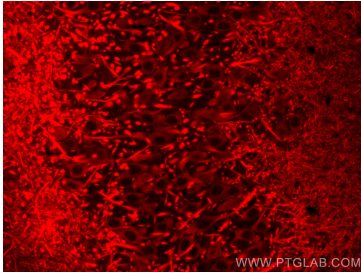
Storage:
Store at -20°C. Avoid exposure to light. Stable for one year after shipment.
Storage Buffer:
PBS with 50% Glycerol, 0.05% Proclin300, 0.5% BSA, pH 7.3.
Aliquoting is unnecessary for -20°C storage

*** 20ul sizes contain 0.1% BSA

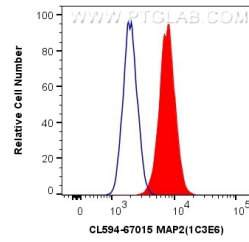
For technical support and original validation data for this product please contact:
T: 1 (888) 4PTGLAB (1-888-478-4522) (toll free in USA), or 1(312) 455-8498 (outside USA)
E: proteintech@ptglab.com
W: ptglab.com

This product is exclusively available under Proteintech Group brand and is not available to purchase from any other manufacturer.

Selected Validation Data



Immunofluorescent analysis of (4% PFA) fixed rat brain tissue using CoraLite®594 MAP2 antibody (CL594-67015, Clone: 1C3E6) at dilution of 1:200.



1X10⁶ Neuro-2a cells were intracellularly stained with 0.2 ug CoraLite®594 Anti-Human MAP2 (CL594-67015, Clone:1C3E6) (red), or 0.2 ug Control Antibody. Cells were fixed with 4% PFA and permeabilized with Flow Cytometry Perm Buffer (PF00011-C).