

For Research Use Only

CoraLite®594-conjugated GLUD1 Monoclonal antibody

Catalog Number:CL594-67026



Basic Information

Catalog Number: CL594-67026	GenBank Accession Number: BC040132	Purification Method: Protein A purification
Size: 100ul , Concentration: 1000 ug/ml by Nanodrop;	GeneID (NCBI): 2746	CloneNo.: 4G10D3
Source: Mouse	UNIPROT ID: P00367	Recommended Dilutions: IF-P 1:50-1:500
Isotype: IgG2b	Full Name: glutamate dehydrogenase 1	Excitation/Emission maxima wavelengths: 588 nm / 604 nm
Immunogen Catalog Number: AG6179	Calculated MW: 61 kDa	
	Observed MW: 45-55 kDa	

Applications

Tested Applications: IF-P	Positive Controls: IF-P : human liver cancer tissue,
Species Specificity: Human, Mouse, Rat	

Background Information

Human glutamate dehydrogenase (GDH), an enzyme central to the metabolism of glutamate, is known to exist in housekeeping and nerve tissue-specific isoforms encoded by the GLUD1 and GLUD2 genes, respectively. It catalyses the reversible inter-conversion of glutamate to alpha-ketoglutarate and ammonia, thus interconnecting amino acid and carbohydrate metabolism. GLUD1 might contribute to the formation of specific synapses in the hippocampus such as those formed by the projecting neurons of the entorhinal cortex(PMID: 22138648). GLUD1 has a calculated molecular mass of 61 kDa and an apparent molecular mass of 45-55 kDa with the 53aa transit peptide removed.

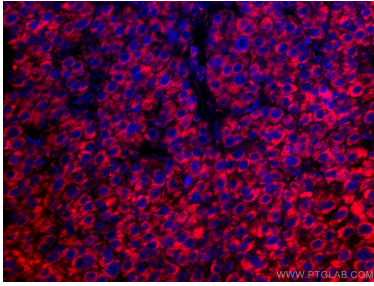
Storage

Storage:
Store at -20°C. Avoid exposure to light. Stable for one year after shipment.
Storage Buffer:
PBS with 50% Glycerol, 0.05% Proclin300, 0.5% BSA, pH 7.3.
Aliquoting is unnecessary for -20°C storage

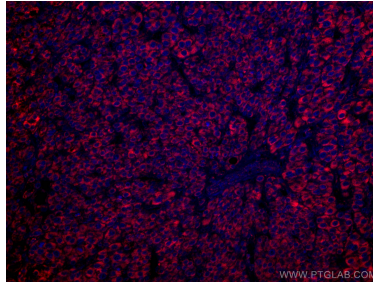
For technical support and original validation data for this product please contact:
T: 1 (888) 4PTGLAB (1-888-478-4522) (toll free in USA), or 1(312) 455-8498 (outside USA)
E: proteintech@ptglab.com
W: ptglab.com

This product is exclusively available under Proteintech Group brand and is not available to purchase from any other manufacturer.

Selected Validation Data



Immunofluorescent analysis of (4% PFA) fixed human liver cancer tissue using CoraLite®594-conjugated GLUD1 antibody (CL594-67026, Clone: 4G10D3) at dilution of 1:200.



Immunofluorescent analysis of (4% PFA) fixed human liver cancer tissue using CoraLite®594-conjugated GLUD1 antibody (CL594-67026, Clone: 4G10D3) at dilution of 1:200.