

# CoraLite®594-conjugated Flightless I Monoclonal antibody

Catalog Number: **CL594-67039**

## Basic Information

**Catalog Number:**

CL594-67039

**Size:**

100ul , Concentration: 1000 µg/ml by Nanodrop;

**Source:**

Mouse

**Isotype:**

IgG2a

**Immunogen Catalog Number:**

AG26865

**GenBank Accession Number:**

BC025300

**GeneID (NCBI):**

2314

**UNIPROT ID:**

Q13045

**Full Name:**

flightless I homolog (Drosophila)

**Calculated MW:**

1269 aa, 145 kDa

**Observed MW:**

145-150 kDa

**Purification Method:**

Protein A purification

**CloneNo.:**

2F9C8

**Recommended Dilutions:**

IF/ICC 1:50-1:500

**Excitation/Emission maxima wavelengths:**

588 nm / 604 nm

## Applications

**Tested Applications:**

IF

**Species Specificity:**

Human, Mouse, Rat

**Positive Controls:**

IF/ICC : HeLa cells,

## Background Information

Flightless I (Flil) is the most evolutionarily conserved member of the gelsolin superfamily of proteins which are key regulators of actin filament assembly and turnover. Flil comprises an N-terminal leucine-rich repeat (LRR) domain which is not present in other gelsolin family members, and the LRR domain may enable interactions between Flil and other molecules involved in signal transduction, thereby spatially integrating signaling and actin remodeling functions. This protein was originally found in Drosophila and participates in the embryonic development, while mammalian Flil protein was involved in the regulation of wound repair, skin barrier development. Studies recently demonstrated that Flil protein associated with colorectal cancer, hepatocellular and prostate cancer (PMID:30091651; 28498392).

## Storage

**Storage:**

Store at -20°C. Avoid exposure to light. Stable for one year after shipment.

**Storage Buffer:**

PBS with 50% Glycerol, 0.05% Proclin300, 0.5% BSA, pH 7.3.

Aliquoting is unnecessary for -20°C storage

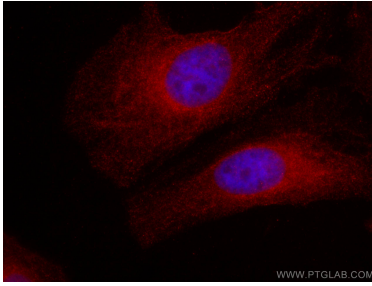
For technical support and original validation data for this product please contact:

T: 1 (888) 4PTGLAB (1-888-478-4522) (toll free in USA), or 1(312) 455-8498 (outside USA)

E: [proteintech@ptglab.com](mailto:proteintech@ptglab.com)W: [ptglab.com](http://ptglab.com)

This product is exclusively available under Proteintech Group brand and is not available to purchase from any other manufacturer.

## Selected Validation Data



Immunofluorescent analysis of (4% PFA) fixed HeLa cells using Coralite®594-conjugated Flightless I antibody (CL594-67039, Clone: 2F9C8 ) at dilution of 1:100.