

For Research Use Only

# CoraLite®594-conjugated DNASE1L3 Monoclonal antibody

Catalog Number:CL594-67041



## Basic Information

<b>Catalog Number:</b> CL594-67041	<b>GenBank Accession Number:</b> BC015831	<b>Purification Method:</b> Protein A purification
<b>Size:</b> 100ul , Concentration: 1000 ug/ml by Nanodrop;	<b>GeneID (NCBI):</b> 1776	<b>CloneNo.:</b> 1A4D4
<b>Source:</b> Mouse	<b>UNIPROT ID:</b> Q13609	<b>Recommended Dilutions:</b> IF/ICC 1:50-1:500
<b>Isotype:</b> IgG2a	<b>Full Name:</b> deoxyribonuclease I-like 3	<b>Excitation/Emission maxima wavelengths:</b> 588 nm / 604 nm
<b>Immunogen Catalog Number:</b> AG28187	<b>Calculated MW:</b> 305 aa, 36 kDa	
	<b>Observed MW:</b> 33-38 kDa	

## Applications

<b>Tested Applications:</b> IF/ICC, FC (Intra)	<b>Positive Controls:</b> IF/ICC : HepG2 cells,
<b>Species Specificity:</b> human, mouse	

## Background Information

Deoxyribonuclease 1-like 3 (DNASE1L3, DNase gamma, DNase Y, LS-DNase) is member of a DNASE1 protein family that is identified by similar biochemical properties such as  $Ca^{2+}/Mg^{2+}$ -dependency and an optimal pH of about 7.0 as well as by a high similarity in their nucleic acid and amino acid sequences [PMID:15796714]. It is an endonuclease and cleaves double-stranded DNA (and single-stranded DNA) producing 3'-OH/5'-P ends, which is  $Ca^{2+}/Mg^{2+}$ -dependent and inhibited by  $Zn^{2+}$ , but not by monomeric actin [PMID:9665719]. In addition, it has been suggested to be involved in apoptotic DNA fragmentation of thymocytes' neuronal PC12 cells, C2C12 myoblasts and of cell lines expressing the recombinant nuclease [PMID: 7957253, 9307016]

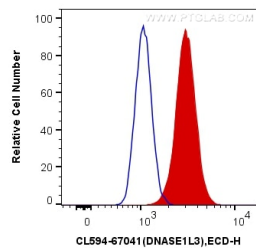
## Storage

**Storage:**  
Store at -20°C. Avoid exposure to light. Stable for one year after shipment.  
**Storage Buffer:**  
PBS with 50% Glycerol, 0.05% Proclin300, 0.5% BSA, pH 7.3.  
Aliquoting is unnecessary for -20°C storage

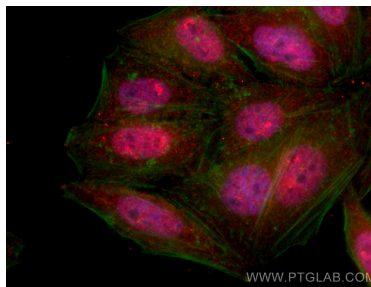
For technical support and original validation data for this product please contact:  
T: 1 (888) 4PTGLAB (1-888-478-4522) (toll free in USA), or 1(312) 455-8498 (outside USA)  
E: [proteintech@ptglab.com](mailto:proteintech@ptglab.com)  
W: [ptglab.com](http://ptglab.com)

This product is exclusively available under Proteintech Group brand and is not available to purchase from any other manufacturer.

## Selected Validation Data



1X10<sup>6</sup> HepG2 cells were intracellularly stained with 0.4 ug CoraLite® 594 Anti-Human DNASE1L3 (CL594-67041, Clone:1A4D4) (red), or 0.4 ug Mouse IgG2a Isotype Control (CL594-66360-2, Clone: K11A1B2A2) (blue). Cells were fixed with 4% PFA and permeabilized with Flow Cytometry Perm Buffer (PF00011-C).



Immunofluorescent analysis of (4% PFA) fixed HepG2 cells using CoraLite® 594 DNASE1L3 antibody (CL594-67041, Clone: 1A4D4) at dilution of 1:200, CL488-Phalloidin (green).