

For Research Use Only

# CoraLite®594-conjugated CYP27A1 Monoclonal antibody



Catalog Number:CL594-67045

## Basic Information

<b>Catalog Number:</b> CL594-67045	<b>GenBank Accession Number:</b> BC051851	<b>Purification Method:</b> Protein G purification
<b>Size:</b> 100ul , Concentration: 1000 µg/ml by Nanodrop;	<b>GeneID (NCBI):</b> 1593	<b>CloneNo.:</b> 3G3F7
<b>Source:</b> Mouse	<b>Full Name:</b> cytochrome P450, family 27, subfamily A, polypeptide 1	<b>Recommended Dilutions:</b> IF 1:50-1:500
<b>Isotype:</b> IgG1	<b>Calculated MW:</b> 60 kDa	<b>Excitation/Emission maxima wavelengths:</b> 593 nm / 614 nm
<b>Immunogen Catalog Number:</b> AG7746	<b>Observed MW:</b> 54-60 kDa	

## Applications

**Tested Applications:**

IF

**Species Specificity:**

Human, Mouse, Rat

**Positive Controls:**

IF : human liver cancer tissue,

## Background Information

### Storage

**Storage:**

Store at -20°C. Avoid exposure to light.

**Storage Buffer:**

PBS with 50% Glycerol, 0.05% Proclin300, 0.5% BSA, pH 7.3.

Aliquoting is unnecessary for -20°C storage

\*\*\* 20ul sizes contain 0.1% BSA

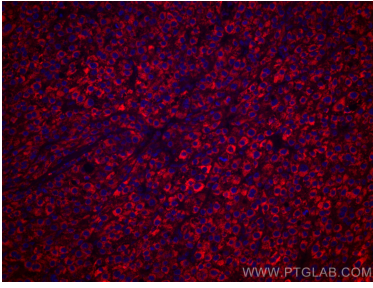
For technical support and original validation data for this product please contact:

T: 1 (888) 4PTGLAB (1-888-478-4522) (toll free  
in USA), or 1(312) 455-8498 (outside USA)

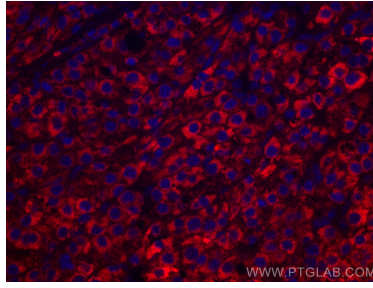
E: [proteintech@ptglab.com](mailto:proteintech@ptglab.com)  
W: [ptglab.com](http://ptglab.com)

This product is exclusively available under Proteintech Group brand and is not available to purchase from any other manufacturer.

## Selected Validation Data



Immunofluorescent analysis of (4% PFA) fixed human liver cancer tissue using CoraLite®594 CYP27A1 antibody (CL594-67045, Clone: 3G3F7) at dilution of 1:200.



Immunofluorescent analysis of (4% PFA) fixed human liver cancer tissue using CoraLite®594 CYP27A1 antibody (CL594-67045, Clone: 3G3F7) at dilution of 1:200.