

For Research Use Only

CoraLite®594-conjugated CYP3A4 Monoclonal antibody



Catalog Number:CL594-67110

Basic Information

Catalog Number: CL594-67110	GenBank Accession Number: BC101631	Purification Method: Protein G purification
Size: 100ul , Concentration: 1000 µg/ml by Nanodrop;	GeneID (NCBI): 1576	CloneNo.: 2F11C4
Source: Mouse	UNIPROT ID: P08684	Recommended Dilutions: IF-P 1:50-1:500
Isotype: IgG1	Full Name: cytochrome P450, family 3, subfamily A, polypeptide 4	Excitation/Emission maxima wavelengths: 588 nm / 604 nm
Immunogen Catalog Number: AG13074	Calculated MW: 503 aa, 57 kDa	
	Observed MW: 51-57 kDa	

Applications

Tested Applications: IF	Positive Controls: IF-P : mouse liver tissue,
Species Specificity: Human, Mouse, Rat, Pig	

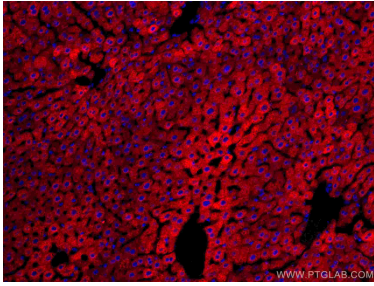
Storage

Storage:
Store at -20°C. Avoid exposure to light.
Storage Buffer:
PBS with 50% Glycerol, 0.05% Proclin300, 0.5% BSA, pH 7.3.
Aliquoting is unnecessary for -20°C storage

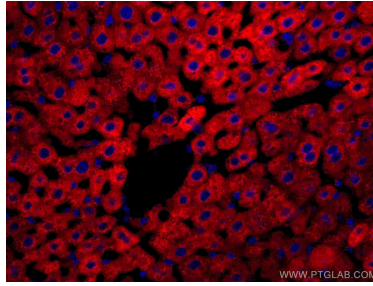
For technical support and original validation data for this product please contact:
T: 1 (888) 4PTGLAB (1-888-478-4522) (toll free in USA), or 1(312) 455-8498 (outside USA)
E: proteintech@ptglab.com
W: ptglab.com

This product is exclusively available under Proteintech Group brand and is not available to purchase from any other manufacturer.

Selected Validation Data



Immunofluorescent analysis of (4% PFA) fixed mouse liver tissue using CoraLite®594 CYP3A4 antibody (CL594-67110, Clone: 2F11C4) at dilution of 1:200.



Immunofluorescent analysis of (4% PFA) fixed mouse liver tissue using CoraLite®594 CYP3A4 antibody (CL594-67110, Clone: 2F11C4) at dilution of 1:200.