

For Research Use Only

CoraLite®594-conjugated INA Monoclonal antibody

Catalog Number:CL594-67120



Basic Information

Catalog Number:

CL594-67120

Size:

100ul , Concentration: 1000 ug/ml by
Nanodrop;

Source:

Mouse

Isotype:

IgG2a

Immunogen Catalog Number:

AG13655

GenBank Accession Number:

BC006359

GeneID (NCBI):

9118

UNIPROT ID:

Q16352

Full Name:

internexin neuronal intermediate
filament protein, alpha

Calculated MW:

55 kDa

Observed MW:

60-66 kDa

Purification Method:

Protein A purification

CloneNo.:

3C12A8

Recommended Dilutions:

IF/ICC 1:50-1:500

Excitation/Emission maxima
wavelengths:

588 nm / 604 nm

Applications

Tested Applications:

IF/ICC, FC (Intra)

Species Specificity:

human, mouse, rat, pig

Positive Controls:

IF/ICC : SH-SY5Y cells,

Background Information

INA, also named as Alpha internexin, is a 66 kDa intermediate filament protein which is involved in the morphogenesis of neurons. INA is mainly expressed in various kinds of central and peripheral neurons from early development and highly expressed in neurodegenerative and neuronal death cells. The MW of INA ranges from 60 kDa in human, pig and mouse to 66 kDa in rat.(PMID: 29940892, 2201753)

Storage

Storage:

Store at -20°C. Avoid exposure to light. Stable for one year after shipment.

Storage Buffer:

PBS with 50% Glycerol, 0.05% Proclin300, 0.5% BSA, pH 7.3.

Aliquoting is unnecessary for -20°C storage

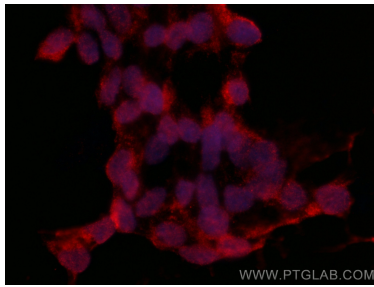
For technical support and original validation data for this product please contact:

T: 1 (888) 4PTGLAB (1-888-478-4522) (toll free
in USA), or 1(312) 455-8498 (outside USA)

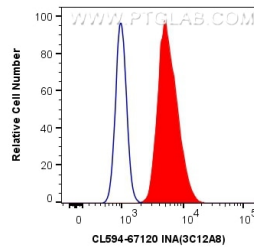
E: proteintech@ptglab.com
W: ptglab.com

This product is exclusively available under Proteintech Group brand and is not available to purchase from any other manufacturer.

Selected Validation Data



Immunofluorescent analysis of (4% PFA) fixed SH-SY5Y cells using CoraLite®594 INA antibody (CL594-67120, Clone: 3C12A8) at dilution of 1:200.



1X10⁶ SH-SY5Y cells were intracellularly stained with 0.4 ug CoraLite®594 Anti-Human INA (CL594-67120, Clone:3C12A8) (red), or 0.4 ug Control Antibody. Cells were fixed with 4% PFA and permeabilized with Flow Cytometry Perm Buffer (PF00011-C).