

For Research Use Only

CoraLite®594-conjugated SUMO2/3 Monoclonal antibody



Catalog Number: CL594-67154

Featured Product

Basic Information

| | | |
|---|--|---|
| Catalog Number: CL594-67154 | GenBank Accession Number: BC008450 | Purification Method: Protein A purification |
| Size: 100ul , Concentration: 2000 µg/ml by Nanodrop; | GeneID (NCBI): 6613 | CloneNo.: 1A1B3 |
| Source: Mouse | Full Name: SMT3 suppressor of mif two 3 homolog 2 (S. cerevisiae) | Recommended Dilutions: IF 1:50-1:500 |
| Isotype: IgG2b | Calculated MW: 11 kDa | Excitation/Emission maxima wavelengths: 588 nm / 604 nm |
| Immunogen Catalog Number: AG28672 | Observed MW: 18 kDa | |

Applications

| | |
|--|---|
| Tested Applications: FC (Intra), IF | Positive Controls: IF : HeLa cells, |
| Species Specificity: Human, Mouse, Rat | |

Background Information

Ubiquitin is most famous for its function in targeting proteins for degradation by the 26S proteasome, ubiquitin needs to be attached to a substrate in chains (polyubiquitylation) before being recognized by proteasome. Similarly, SUMO (small ubiquitin-related modifier) can be linked to substrates in chains (polysumoylation), SUMO modification has been implicated in many important cellular processes including the control of genome stability, signal transduction, targeting to and formation of nuclear compartments, cell cycle and meiosis. There are 4 confirmed SUMO isoforms in human, SUMO-1, SUMO-2, SUMO-3 and SUMO-4. SUMO-2 and SUMO-3 are nearly identical but are distinct from SUMO-1. SUMO2/3 conjugation was recently widely involved in neuroprotective activities. A substitution (M55V) of SUMO4 was strongly associated with the pathogenesis of type 1 diabetes (T1D) involving NF kappa B related mechanisms.

Storage

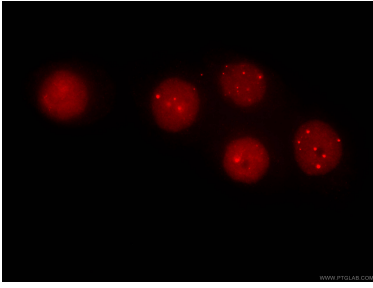
Storage:
Store at -20°C. Avoid exposure to light. Stable for one year after shipment.
Storage Buffer:
PBS with 50% Glycerol, 0.05% Proclin300, 0.5% BSA, pH 7.3.
Aliquoting is unnecessary for -20°C storage

*** 20ul sizes contain 0.1% BSA

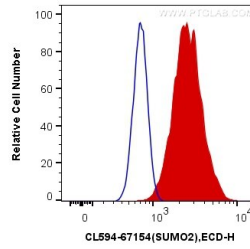
For technical support and original validation data for this product please contact:
T: 1 (888) 4PTGLAB (1-888-478-4522) (toll free in USA), or 1(312) 455-8498 (outside USA)
E: proteintech@ptglab.com
W: ptglab.com

This product is exclusively available under Proteintech Group brand and is not available to purchase from any other manufacturer.

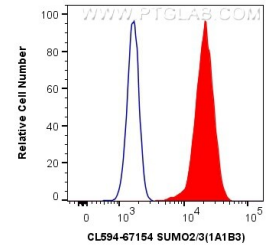
Selected Validation Data



Immunofluorescent analysis of (4% PFA) fixed HeLa cells using CL594-67154 (SUMO2/3 antibody) at dilution of 1:100.



1X10⁶ HeLa cells were intracellularly stained with 0.4 ug CoraLite®594 Anti-Human SUMO2/3 (CL594-67154, Clone:1A1B3) (red), or 0.4 ug Mouse IgG2b Isotype Control (CL594-66360-3, Clone: K11B8C4B5) (blue). Cells were fixed and permeabilized with Transcription Factor Staining Buffer Kit (PF00011).



1X10⁶ HeLa cells were intracellularly stained with 0.4 ug CoraLite®594 Anti-Human SUMO2/3 (CL594-67154, Clone:1A1B3) (red), or 0.4 ug Mouse IgG2b Isotype Control (CL594-66360-3, Clone: K11B8C4B5) (blue). Cells were fixed and permeabilized with Transcription Factor Staining Buffer Kit (PF00011).