

For Research Use Only

CoraLite®594-conjugated Cytohesin 2 Monoclonal antibody



Catalog Number:CL594-67185

Basic Information

Catalog Number: CL594-67185	GenBank Accession Number: BC004361	Purification Method: Protein A purification
Size: 100ul , Concentration: 1000 µg/ml by Nanodrop;	GeneID (NCBI): 9266	CloneNo.: 3A7A1
Source: Mouse	Full Name: cytohesin 2	Recommended Dilutions: IF 1:50-1:500
Isotype: IgG2a	Calculated MW: 47 kDa	Excitation/Emission maxima wavelengths: 588 nm / 604 nm
Immunogen Catalog Number: AG21279	Observed MW: 47 kDa	

Applications

Tested Applications: IF	Positive Controls: IF : HeLa cells,
Species Specificity: Human, mouse, rat	

Background Information

Pleckstrin homology, Sec7 and coiled/coil domains 2 (PSCD2) is a member of the PSCD family. Members of this family have identical structural organization that consists of an N-terminal coiled-coil motif, a central Sec7 domain, and a C-terminal pleckstrin homology (PH) domain. The coiled-coil motif is involved in homodimerization, the Sec7 domain contains guanine-nucleotide exchange protein (GEP) activity, and the PH domain interacts with phospholipids and is responsible for association of PSCDs with membranes. Members of this family appear to mediate the regulation of protein sorting and membrane trafficking. PSCD2 exhibits GEP activity in vitro with small G proteins ARF1, ARF3, and ARF6.

Storage

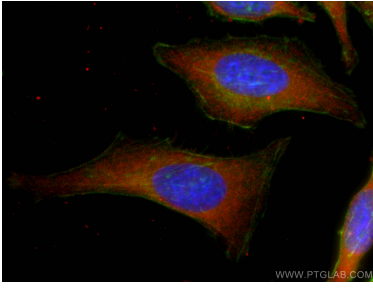
Storage:
Store at -20°C. Avoid exposure to light. Stable for one year after shipment.
Storage Buffer:
PBS with 50% Glycerol, 0.05% Proclin300, 0.5% BSA, pH 7.3.
Aliquoting is unnecessary for -20°C storage

*** 20ul sizes contain 0.1% BSA

For technical support and original validation data for this product please contact:
T: 1 (888) 4PTGLAB (1-888-478-4522) (toll free in USA), or 1(312) 455-8498 (outside USA)
E: proteintech@ptglab.com
W: ptglab.com

This product is exclusively available under Proteintech Group brand and is not available to purchase from any other manufacturer.

Selected Validation Data



Immunofluorescent analysis of (-20°C Ethanol) fixed HeLa cells using CoraLite®594-conjugated Cytohesin 2 antibody (CL594-67185, Clone: 3A7A1) at dilution of 1:200, CL488-Phalloidin (green).