

For Research Use Only

CoraLite®594-conjugated ENO1 Monoclonal antibody

Catalog Number: CL594-67187

Featured Product



Basic Information

Catalog Number:

CL594-67187

Size:

100ul , Concentration: 1000 ug/ml by Nanodrop;

Source:

Mouse

Isotype:

IgM

Immunogen Catalog Number:

AG17518

GenBank Accession Number:

BC015641

GeneID (NCBI):

2023

ENSEMBL Gene ID:

ENSG00000074800

UNIPROT ID:

P06733

Full Name:

enolase 1, (alpha)

Calculated MW:

47 kDa

Observed MW:

47 kDa

Purification Method:

Thiophilic affinity chromatograph

CloneNo.:

1D6E8

Recommended Dilutions:

IF/ICC 1:50-1:500

Excitation/Emission maxima wavelengths:

588 nm / 604 nm

Applications

Tested Applications:

IF/ICC

Species Specificity:

human, mouse, rat, pig

Positive Controls:

IF/ICC : HeLa cells,

Background Information

ENO1, also named as NNE, ENO1L1, MBPB1, MPB1 and MBP1, belongs to the enolase family. ENO1 is a metabolic enzyme involved in the synthesis of pyruvate. It also acts as a plasminogen receptor and mediates the activation of plasmin and extracellular matrix degradation. In tumor cells, ENO1 is up-regulated and supports the Warburg effect; it is expressed at the cell surface, where it promotes cancer invasion, and is subjected to a specific array of post-translational modifications, namely acetylation, methylation and phosphorylation. ENO1 overexpression and post-translational modifications could be of diagnostic and prognostic value in many cancer types. (PMID: 27814656)

Storage

Storage:

Store at -20°C. Avoid exposure to light. Stable for one year after shipment.

Storage Buffer:

PBS with 50% Glycerol, 0.05% Proclin300, 0.5% BSA, pH 7.3.

Aliquoting is unnecessary for -20°C storage

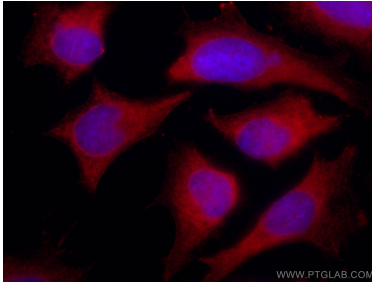
For technical support and original validation data for this product please contact:

T: 1 (888) 4PTGLAB (1-888-478-4522) (toll free in USA), or 1(312) 455-8498 (outside USA)

E: proteintech@ptglab.com
W: ptglab.com

This product is exclusively available under Proteintech Group brand and is not available to purchase from any other manufacturer.

Selected Validation Data



Immunofluorescent analysis of (-20°C Ethanol) fixed HeLa cells using Coralite®594-conjugated ENO1 antibody (CL594-67187, Clone: 1D6E8) at dilution of 1:100.