

For Research Use Only

CoraLite®594-conjugated SBDS Monoclonal antibody

Catalog Number: CL594-67200

Featured Product



Basic Information

Catalog Number:

CL594-67200

Size:

100ul , Concentration: 1000 ug/ml by
Nanodrop;

Source:

Mouse

Isotype:

IgG2a

Immunogen Catalog Number:

AG11731

GenBank Accession Number:

BC065700

GeneID (NCBI):

51119

UNIPROT ID:

Q9Y3A5

Full Name:

Shwachman-Bodian-Diamond
syndrome

Calculated MW:

250 aa, 29 kDa

Observed MW:

29-31 kDa

Purification Method:

Protein A purification

CloneNo.:

1F8A10

Recommended Dilutions:

WB 1:500-1:2000

Excitation/Emission maxima wavelengths:

588 nm / 604 nm

Applications

Tested Applications:

WB, FC (Intra)

Species Specificity:

human, mouse, rat

Positive Controls:

WB : HepG2 cells, HeLa cells

Background Information

Shwachman-Bodian-Diamond syndrome (SBDS) is a member of a highly conserved protein family that exists from archaea to vertebrates and plants. The protein may function in RNA metabolism. Mutations within its gene are associated with Shwachman-Bodian-Diamond syndrome. This gene encodes a member of a highly conserved protein family that exists from archaea to vertebrates and plants. The encoded protein may function in RNA metabolism. Mutations within this gene are associated with Shwachman-Bodian-Diamond syndrome. An alternative transcript has been described, but its biological nature has not been determined. This gene has a closely linked pseudogene that is distally located.

Storage

Storage:

Store at -20°C. Avoid exposure to light. Stable for one year after shipment.

Storage Buffer:

PBS with 50% Glycerol, 0.05% Proclin300, 0.5% BSA, pH 7.3.

Aliquoting is unnecessary for -20°C storage

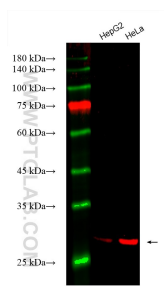
For technical support and original validation data for this product please contact:

T: 1 (888) 4PTGLAB (1-888-478-4522) (toll free
in USA), or 1(312) 455-8498 (outside USA)

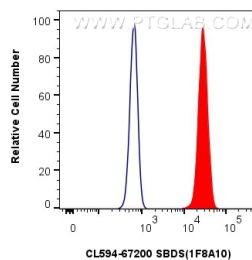
E: proteintech@ptglab.com
W: ptglab.com

This product is exclusively available under Proteintech Group brand and is not available to purchase from any other manufacturer.

Selected Validation Data



Various lysates were subjected to SDS PAGE followed by western blot with CL594-67200 (SBDS antibody) at dilution of 1:1000 incubated at room temperature for 1.5 hours.



1×10^6 HeLa cells were intracellularly stained with 0.4 ug CoraLite®594-conjugated SBDS Monoclonal antibody (CL594-67200, Clone:1F8A10)(red), or 0.4 ug CoraLite®594 Mouse IgG2a isotype control (11A1B2) (CL594-66360-2, Clone: 11A1B2) (blue). Cells were fixed with 4% PFA and permeabilized with Flow Cytometry Perm Buffer (PF00011-C).