

For Research Use Only

# CoraLite®594-conjugated SQLE Monoclonal antibody



Catalog Number:CL594-67206

## Basic Information

<b>Catalog Number:</b> CL594-67206	<b>GenBank Accession Number:</b> BC017033	<b>Purification Method:</b> Protein A purification
<b>Size:</b> 100ul , Concentration: 1000 µg/ml by Nanodrop;	<b>GeneID (NCBI):</b> 6713	<b>CloneNo.:</b> 1C9A2
<b>Source:</b> Mouse	<b>Full Name:</b> squalene epoxidase	<b>Excitation/Emission maxima wavelengths:</b> 588 nm / 604 nm
<b>Isotype:</b> IgG2a	<b>Calculated MW:</b> 574 aa, 64 kDa	
<b>Immunogen Catalog Number:</b> AG3266	<b>Observed MW:</b> 50-64 kDa	

## Applications

**Tested Applications:**  
FC (Intra)

**Species Specificity:**  
Human, Rat, pig

## Background Information

SQLE, also named as ERG1, SE and SM, belongs to the squalene monooxygenase family. It catalyzes the first oxygenation step in cholesterol synthesis, acting on squalene before cyclization into the basic steroid structure. SQLE may serve as a flux-controlling enzyme beyond 3-hydroxy-3-methylglutaryl-coenzyme A reductase (HMGR, considered as rate limiting). It is also posttranslationally regulated by cholesterol-dependent proteasomal degradation. SQLE is subject to feedback regulation via cholesterol-induced degradation, which depends on its lipid-sensing N terminal regulatory domain. Truncation of SQLE occurs during its endoplasmic reticulum-associated degradation and requires the proteasome, which partially degrades the SQLE N-terminus and eliminates cholesterol-sensing elements within this region. The MW of SQLE is about 50-64 kDa. (PMID:21356516, PMID:28972164)

## Storage

**Storage:**  
Store at -20°C. Avoid exposure to light. Stable for one year after shipment.

**Storage Buffer:**  
PBS with 50% Glycerol, 0.05% Proclin300, 0.5% BSA, pH 7.3.

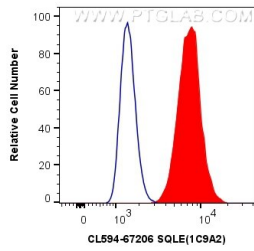
Aliquoting is unnecessary for -20°C storage

\*\*\* 20ul sizes contain 0.1% BSA

For technical support and original validation data for this product please contact:  
T: 1 (888) 4PTGLAB (1-888-478-4522) (toll free in USA), or 1(312) 455-8498 (outside USA) E: proteintech@ptglab.com W: ptglab.com

This product is exclusively available under Proteintech Group brand and is not available to purchase from any other manufacturer.

## Selected Validation Data



1X10<sup>6</sup> HepG2 cells were intracellularly stained with 0.4 ug CoraLite® 594 Anti-Human SQLE (CL594-67206, Clone:1C9A2) (red), or 0.4 ug Mouse IgG2a Isotype Control (CL594-66360-2, Clone: K11A1B2A2) (blue). Cells were fixed with 4% PFA and permeabilized with Flow Cytometry Perm Buffer (PF00011-C).