

For Research Use Only

CoraLite®594-conjugated GCK Monoclonal antibody



Catalog Number:CL594-67216

Basic Information

Catalog Number: CL594-67216	GenBank Accession Number: BC001890	Purification Method: Protein G purification
Size: 100ul , Concentration: 1000 µg/ml by Nanodrop;	GeneID (NCBI): 2645	CloneNo.: 1C3A3
Source: Mouse	Full Name: glucokinase (hexokinase 4)	Recommended Dilutions: IF 1:50-1:500
Isotype: IgG1	Calculated MW: 52 kDa	Excitation/Emission maxima wavelengths: 593 nm / 614 nm
Immunogen Catalog Number: AG8116	Observed MW: 52 kDa	

Applications

Tested Applications: IF	Positive Controls: IF : human liver cancer tissue,
Species Specificity: Human, Mouse, Rat, Pig	

Background Information

Glucokinase (GCK) is a structurally and functionally unique member of hexokinase family. It is expressed only in mammalian liver and pancreatic islet beta cells. Because of its unique functional characteristics, the enzyme plays an important regulatory role in glucose metabolism. The rate of glucose metabolism in liver and pancreas is a function of the activity of the enzyme (PMID:1740341). Moreover, GCK has been found to have relationship with diabetes. Defects in GCK are the cause of maturity-onset diabetes of the young type 2 (MODY2) and familial hyperinsulinemic hypoglycemia type 3 (HHF3). It has 3 isoforms produced by alternative splicing with the same molecular mass of 52 kDa.

Storage

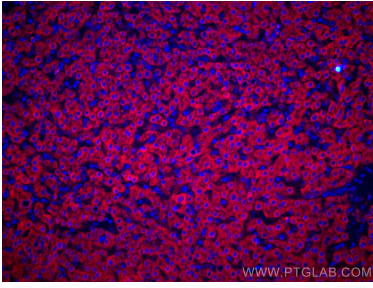
Storage:
Store at -20°C. Avoid exposure to light.
Storage Buffer:
PBS with 50% Glycerol, 0.05% Proclin300, 0.5% BSA, pH 7.3.
Aliquoting is unnecessary for -20°C storage

*** 20ul sizes contain 0.1% BSA

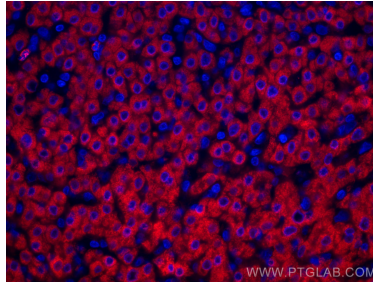
For technical support and original validation data for this product please contact:
T: 1 (888) 4PTGLAB (1-888-478-4522) (toll free in USA), or 1(312) 455-8498 (outside USA)
E: proteintech@ptglab.com
W: ptglab.com

This product is exclusively available under Proteintech Group brand and is not available to purchase from any other manufacturer.

Selected Validation Data



Immunofluorescent analysis of (4% PFA) fixed human liver cancer tissue using CoraLite®594 GCK antibody (CL594-67216, Clone: 1C3A3) at dilution of 1:200.



Immunofluorescent analysis of (4% PFA) fixed human liver cancer tissue using CoraLite®594 GCK antibody (CL594-67216, Clone: 1C3A3) at dilution of 1:200.