

For Research Use Only

CoraLite®594-conjugated Ins1 Monoclonal antibody



Catalog Number:CL594-67284

Basic Information

Catalog Number: CL594-67284	GenBank Accession Number: NM_019129.3	Purification Method: Protein A purification
Size: 100ul , Concentration: 1000 µg/ml by Nanodrop;	GeneID (NCBI): 24505	CloneNo.: 3A11C1
Source: Mouse	Full Name: insulin 1	Recommended Dilutions: IF 1:150-1:600
Isotype: IgG2a	Calculated MW: 12 kDa	Excitation/Emission maxima wavelengths: 588 nm / 604 nm
Immunogen Catalog Number: AG28809		

Applications

Tested Applications: IF	Positive Controls: IF : rat pancreas tissue, mouse pancreas tissue
Species Specificity: Rat, mouse	

Background Information

Storage

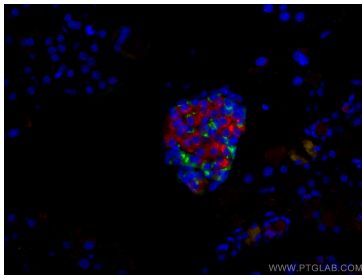
Storage:
Store at -20°C. Avoid exposure to light. Stable for one year after shipment.
Storage Buffer:
PBS with 50% Glycerol, 0.05% Proclin300, 0.5% BSA, pH 7.3.
Aliquoting is unnecessary for -20°C storage

*** 20ul sizes contain 0.1% BSA

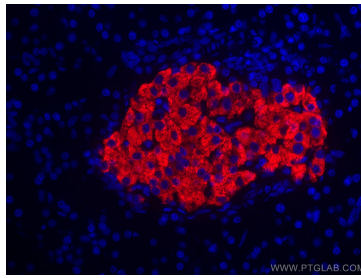
For technical support and original validation data for this product please contact:
T: 1 (888) 4PTGLAB (1-888-478-4522) (toll free in USA), or 1(312) 455-8498 (outside USA) E: proteintech@ptglab.com
W: ptglab.com

This product is exclusively available under Proteintech Group brand and is not available to purchase from any other manufacturer.

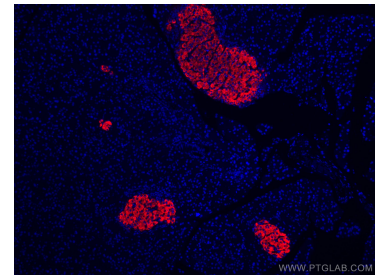
Selected Validation Data



Immunofluorescent analysis of (4% PFA) fixed mouse pancreas tissue using CoraLite® 594 Ins1 antibody (CL594-67284, Clone: 3A11C1) at dilution of 1:200, CoraLite® 488 Glucagon antibody (CL488-67286, Clone: 2A8G1, green). DAPI (blue).



Immunofluorescent analysis of (4% PFA) fixed rat pancreas tissue using CoraLite® 594-conjugated Ins1 antibody (CL594-67284, Clone: 3A11C1) at dilution of 1:300.



Immunofluorescent analysis of (4% PFA) fixed rat pancreas tissue using CoraLite® 594-conjugated Ins1 antibody (CL594-67284, Clone: 3A11C1) at dilution of 1:300.