

For Research Use Only

CoraLite®594-conjugated Collagen Type I Monoclonal antibody



Catalog Number: CL594-67288

1 Publications

Basic Information

Catalog Number: CL594-67288	GenBank Accession Number: NM_000088	Purification Method: Protein G purification
Size: 100ul , Concentration: 1000 µg/ml by Nanodrop;	GeneID (NCBI): 1277	CloneNo.: 1E9A7
Source: Mouse	Full Name: collagen, type I, alpha 1	Recommended Dilutions: IF 1:50-1:500
Isotype: IgG1	Calculated MW: 139 kDa	Excitation/Emission maxima wavelengths: 588 nm / 604 nm
	Observed MW: 120-130 kDa	

Applications

Tested Applications: IF	Positive Controls: IF : human colon cancer tissue, human breast cancer tissue, mouse skin tissue
Cited Applications: IF	
Species Specificity: Human, Mouse	
Cited Species: human	

Background Information

Type I collagen, the major structural component of connective tissues such as skin, tendon and bone, is the most abundant and widely expressed collagen in humans (PMID: 7620364; 8645190; 9016532). Type I collagen is a heterotrimer comprising one alpha 2(I) and two alpha 1(I) chains which are encoded by the unlinked loci COL1A2 and COL1A1 respectively. Mutations in COL1A1 are associated with osteogenesis imperfecta types I-IV, Ehlers-Danlos syndrome type VIIA, Ehlers-Danlos syndrome Classical type, Caffey Disease and idiopathic osteoporosis. This antibody raised against a synthesized peptide corresponding to 1206-1218 aa of human pro-alpha 1 chain of type I collagen recognize collagen alpha-1(I) chain.

Notable Publications

Author	Pubmed ID	Journal	Application
Jingwei Cai	37151879	Int J Biol Sci	IF

Storage

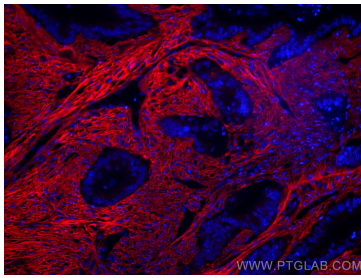
Storage:
Store at -20°C. Avoid exposure to light. Stable for one year after shipment.
Storage Buffer:
PBS with 50% Glycerol, 0.05% Proclin300, 0.5% BSA, pH 7.3.
Aliquoting is unnecessary for -20°C storage

*** 20ul sizes contain 0.1% BSA

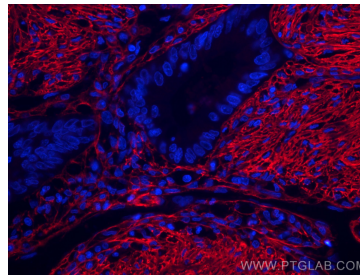
For technical support and original validation data for this product please contact:
T: 1 (888) 4PTGLAB (1-888-478-4522) (toll free in USA), or 1(312) 455-8498 (outside USA)
E: proteintech@ptglab.com
W: ptglab.com

This product is exclusively available under Proteintech Group brand and is not available to purchase from any other manufacturer.

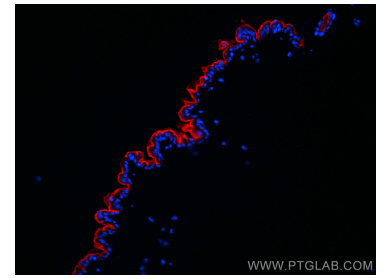
Selected Validation Data



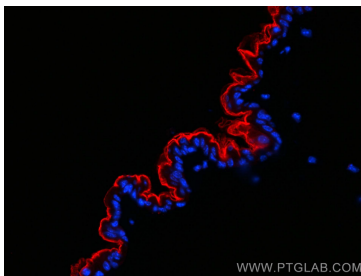
Immunofluorescent analysis of (4% PFA) fixed human colon cancer tissue using CoraLite®594 Collagen Type I antibody (CL594-67288, Clone: 1E9A7) at dilution of 1:200.



Immunofluorescent analysis of (4% PFA) fixed human colon cancer tissue using CoraLite®594 Collagen Type I antibody (CL594-67288, Clone: 1E9A7) at dilution of 1:200.



Immunofluorescent analysis of (4% PFA) fixed mouse skin tissue using CoraLite®594 Collagen Type I antibody (CL594-67288, Clone: 1E9A7) at dilution of 1:200.



Immunofluorescent analysis of (4% PFA) fixed mouse skin tissue using CoraLite®594 Collagen Type I antibody (CL594-67288, Clone: 1E9A7) at dilution of 1:200.