

For Research Use Only

CoraLite®594-conjugated MYH1 Monoclonal antibody



Catalog Number:CL594-67299

Basic Information

Catalog Number: CL594-67299	GenBank Accession Number: BC114545	Purification Method: Protein A purification
Size: 100ul , Concentration: 1000 µg/ml by Nanodrop;	GeneID (NCBI): 4619	CloneNo.: 1G10H9
Source: Mouse	Full Name: myosin, heavy chain 1, skeletal muscle, adult	Recommended Dilutions: IF 1:50-1:500
Isotype: IgG2a	Calculated MW: 1939 aa, 223 kDa	Excitation/Emission maxima wavelengths: 594 nm / 615 nm
Immunogen Catalog Number: AG17129	Observed MW: 220 kDa	

Applications

Tested Applications: IF	Positive Controls: IF : mouse skeletal muscle tissue,
Species Specificity: Human, mouse, pig	

Background Information

MYH1 (MyHC-2x) encodes the IIX isoform of myosin heavy chain (MyHC). Myosin is a large, ubiquitous, motor protein that generates force through its interaction with actin, thus involving it in a number of cellular processes including cytokinesis, karyokinesis, cell migration, and muscle contraction. Muscle fibers can be divided as type 1 (slow) and type 2 (fast). MYH1 belongs to type 2.

Storage

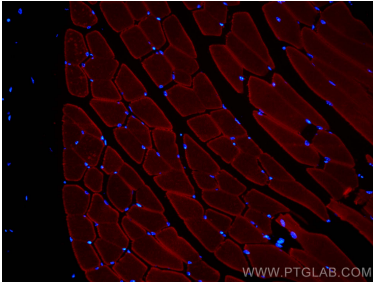
Storage:
Store at -20°C. Avoid exposure to light. Stable for one year after shipment.
Storage Buffer:
PBS with 50% Glycerol, 0.05% Proclin300, 0.5% BSA, pH 7.3.
Aliquoting is unnecessary for -20°C storage

*** 20ul sizes contain 0.1% BSA

For technical support and original validation data for this product please contact:
T: 1 (888) 4PTGLAB (1-888-478-4522) (toll free in USA), or 1(312) 455-8498 (outside USA) E: proteintech@ptglab.com W: ptglab.com

This product is exclusively available under Proteintech Group brand and is not available to purchase from any other manufacturer.

Selected Validation Data



Immunofluorescent analysis of (4% PFA) fixed mouse skeletal muscle tissue using CoraLite®594 MYH1 antibody (CL594-67299, Clone: 1G10H9) at dilution of 1:200.