

For Research Use Only

CoraLite®594-conjugated TRIM25 Monoclonal antibody

Catalog Number:CL594-67314

Featured Product



Basic Information

Catalog Number:

CL594-67314

Size:

100ul , Concentration: 1000 ug/ml by Nanodrop;

Source:

Mouse

Isotype:

IgG1

Immunogen Catalog Number:

AG29325

GenBank Accession Number:

BC016924

GeneID (NCBI):

7706

UNIPROT ID:

Q14258

Full Name:

tripartite motif-containing 25

Calculated MW:

630 aa, 71 kDa

Observed MW:

68-71 kDa

Purification Method:

Protein G purification

CloneNo.:

1H6G1

Recommended Dilutions:

IF/ICC 1:50-1:500

Excitation/Emission maxima wavelengths:

588 nm / 604 nm

Applications

Tested Applications:

IF/ICC

Species Specificity:

Human

Positive Controls:

IF/ICC : HeLa cells,

Background Information

TRIM25 (tripartite motif-containing 25) is also named as EFP, Z147, ZNF147, RNF147 and belongs to the zinc finger protein family and tripartite motif (TRIM) family. It induces the Lys63-linked ubiquitination of RIG-I, which is crucial for the cytosolic RIG-I signalling pathway to elicit host antiviral innate immunity (PMID:17392790). It is also essential not only for DDX58 ubiquitination but also for DDX58-mediated interferon-production and antiviral activity in response to RNA virus infection (PMID: 17392790).

Storage

Storage:

Store at -20°C. Avoid exposure to light. Stable for one year after shipment.

Storage Buffer:

PBS with 50% Glycerol, 0.05% Proclin300, 0.5% BSA, pH 7.3.

Aliquoting is unnecessary for -20°C storage

For technical support and original validation data for this product please contact:

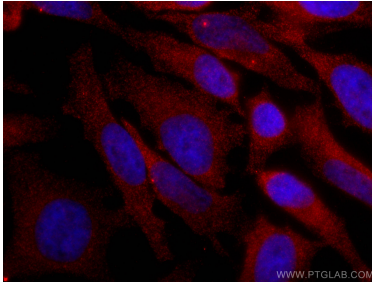
T: 1 (888) 4PTGLAB (1-888-478-4522) (toll free in USA), or 1(312) 455-8498 (outside USA)

E: proteintech@ptglab.com

W: ptglab.com

This product is exclusively available under Proteintech Group brand and is not available to purchase from any other manufacturer.

Selected Validation Data



Immunofluorescent analysis of (4% PFA) fixed HeLa cells using CoraLite®594-conjugated TRIM25 antibody (CL594-67314, Clone: 1H6G1) at dilution of 1:100.