

For Research Use Only

CoraLite®594-conjugated SYNPO Monoclonal antibody

Catalog Number: CL594-67339

1 Publications



Basic Information

Catalog Number:

CL594-67339

Size:

100ul , Concentration: 1000 ug/ml by
Nanodrop;

Source:

Mouse

Isotype:

IgG1

Immunogen Catalog Number:

AG15089

GenBank Accession Number:

BC146665

GeneID (NCBI):

11346

UNIPROT ID:

Q8N3V7

Full Name:

synaptopodin

Calculated MW:

929 aa, 99 kDa

Observed MW:

100-110 kDa

Purification Method:

Protein G purification

CloneNo.:

1E1B1

Recommended Dilutions:

IF-P 1:50-1:500

Excitation/Emission maxima
wavelengths:

588 nm / 604 nm

Applications

Tested Applications:

IF-P

Cited Applications:

IF

Species Specificity:

Human, mouse, rat, pig

Positive Controls:

IF-P : mouse brain tissue,

Background Information

Synaptopodin is a actin-associated protein expressed in mature dendritic spines and renal podocytes. Several isoforms of synaptopodin have been reported: the 100 kDa neural form and 110 kDa renal form. 44-45 kDa may represent the degradation product of synaptopodin. As a podocyte specific protein, synaptopodin expression level was decreased in kidney but increased in the urinary podocytes from patients with preeclampsia, indicating that synaptopodin is a useful marker for preeclampsia. (15841212, 10555072)

Notable Publications

Author	Pubmed ID	Journal	Application
Roberto Boi	36735952	J Am Soc Nephrol	IF

Storage

Storage:

Store at -20°C. Avoid exposure to light. Stable for one year after shipment.

Storage Buffer:

PBS with 50% Glycerol, 0.05% Proclin300, 0.5% BSA, pH 7.3.

Aliquoting is unnecessary for -20°C storage

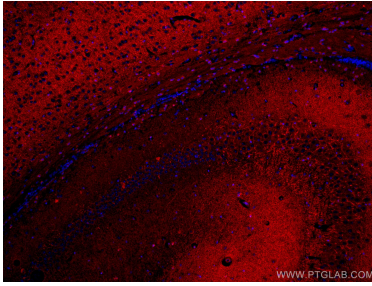
For technical support and original validation data for this product please contact:

T: 1 (888) 4PTGLAB (1-888-478-4522) (toll free
in USA), or 1(312) 455-8498 (outside USA)

E: proteintech@ptglab.com
W: ptglab.com

This product is exclusively available under Proteintech Group brand and is not available to purchase from any other manufacturer.

Selected Validation Data



Immunofluorescent analysis of (4% PFA) fixed mouse brain tissue using CoraLite®594 SYNPO antibody (CL594-67339, Clone: 1E1B1) at dilution of 1:200.