

For Research Use Only

CoraLite®594-conjugated ATG7 Monoclonal antibody

Catalog Number: CL594-67341

Featured Product



Basic Information

Catalog Number:

CL594-67341

Size:

100ul , Concentration: 1000 ug/ml by
Nanodrop;

Source:

Mouse

Isotype:

IgG2a

Immunogen Catalog Number:

AG29172

GenBank Accession Number:

BC000091

GeneID (NCBI):

10533

UNIPROT ID:

O95352

Full Name:

ATG7 autophagy related 7 homolog
(S. cerevisiae)

Calculated MW:

78 kDa

Observed MW:

68-78 kDa

Purification Method:

Protein A purification

CloneNo.:

2B5A10

Recommended Dilutions:

IF/ICC 1:50-1:500

Excitation/Emission maxima

wavelengths:

588 nm / 604 nm

Applications

Tested Applications:

IF/ICC, FC (Intra)

Species Specificity:

human, mouse, rat, pig

Positive Controls:

IF/ICC : HepG2 cells,

Background Information

Atg7 is an E1-like enzyme that is specifically involved in autophagosome formation and is essential for autophagy. As an autophagic-related protein it is required for linking to Atg12, Atg5 and Atg8, which are essential for Atg conjugation and autophagosome formation. Atg7 has been reported as an important regulator of autophagy with starvation-induced or chemotherapeutic agent treatment. The high expression level of ATG7 is related to the survival of patients with breast cancer. There are several isoforms of ATG7 protein ranged from 68 kDa to 78 kDa.

Storage

Storage:

Store at -20°C. Avoid exposure to light. Stable for one year after shipment.

Storage Buffer:

PBS with 50% Glycerol, 0.05% Proclin300, 0.5% BSA, pH 7.3.

Aliquoting is unnecessary for -20°C storage

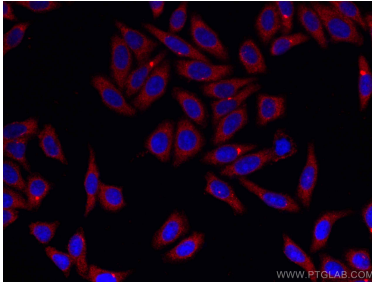
For technical support and original validation data for this product please contact:

T: 1 (888) 4PTGLAB (1-888-478-4522) (toll free
in USA), or 1(312) 455-8498 (outside USA)

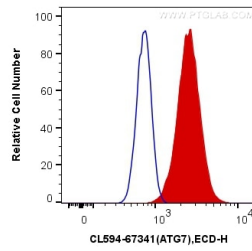
E: proteintech@ptglab.com
W: ptglab.com

This product is exclusively available under Proteintech Group brand and is not available to purchase from any other manufacturer.

Selected Validation Data



Immunofluorescent analysis of (-20°C Methanol) fixed HepG2 cells using Coralite®594 ATG7 antibody (CL594-67341, Clone: 2B5A10) at dilution of 1:200.



1X10⁶ Jurkat cells were intracellularly stained with 0.4 ug Coralite®594 Anti-Human ATG7 (CL594-67341, Clone:2B5A10) (red), or 0.4 ug Mouse IgG2a Isotype Control (CL594-66360-2, Clone: K11A1B2A2) (blue). Cells were fixed with 4% PFA and permeabilized with Flow Cytometry Perm Buffer (PF00011-C).