

For Research Use Only

CoraLite®594-conjugated PTGS1 Monoclonal antibody



Catalog Number:CL594-67346

Basic Information

| | | |
|---|--|---|
| Catalog Number: CL594-67346 | GenBank Accession Number: BC029840 | Purification Method: Protein A purification |
| Size: 100ul , Concentration: 1000 µg/ml by Nanodrop; | GeneID (NCBI): 5742 | CloneNo.: 1F12G7 |
| Source: Mouse | Full Name: prostaglandin-endoperoxide synthase 1 (prostaglandin G/H synthase and cyclooxygenase) | Recommended Dilutions: 1:50-1:500 |
| Isotype: IgG2b | Calculated MW: 599 aa, 69 kDa | Excitation/Emission maxima wavelengths: 588 nm / 604 nm |
| Immunogen Catalog Number: AG28280 | Observed MW: 60-72 kDa | |

Applications

| | |
|--------------------------------------|---|
| Tested Applications: IF | Positive Controls: IF : HeLa cells, |
| Species Specificity: Human | |

Background Information

PTGS1(Prostaglandin G/H synthase 1) belongs to the prostaglandin G/H synthase family and catalyzes the conversion of arachidonic acid to prostaglandin H₂, which is subsequently metabolized to various biologically active prostaglandins. It is also named as COX1(Cyclooxygenase-1). There is no PTGS1 expression in fetal samples (prostate, seminal vesicles, or ejaculatory ducts), and only minimal expression in adult tissues (PMID: 10999846). PTGS1 has some isoforms with MW of 56-72 kD and PTGS1 can form homodimer.

Storage

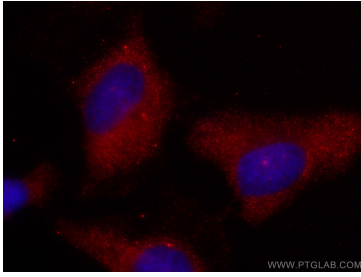
Storage:
Store at -20°C. Avoid exposure to light. Stable for one year after shipment.
Storage Buffer:
PBS with 50% Glycerol, 0.05% Proclin300, 0.5% BSA, pH 7.3.
Aliquoting is unnecessary for -20°C storage

*** 20ul sizes contain 0.1% BSA

For technical support and original validation data for this product please contact:
T: 1 (888) 4PTGLAB (1-888-478-4522) (toll free in USA), or 1(312) 455-8498 (outside USA)
E: proteintech@ptglab.com
W: ptglab.com

This product is exclusively available under Proteintech Group brand and is not available to purchase from any other manufacturer.

Selected Validation Data



Immunofluorescent analysis of (-20°C Methanol) fixed HeLa cells using Coralite@594 PTGS1 antibody (CL594-67346, Clone: 1F12G7) at dilution of 1:200.