

For Research Use Only

CoraLite®594-conjugated ALDH5A1 Monoclonal antibody

Catalog Number:CL594-67347

Featured Product



Basic Information

Catalog Number:

CL594-67347

Size:

100ul , Concentration: 1000 ug/ml by Nanodrop;

Source:

Mouse

Isotype:

IgG1

Immunogen Catalog Number:

AG11155

GenBank Accession Number:

BC034321

GeneID (NCBI):

7915

UNIPROT ID:

P51649

Full Name:

aldehyde dehydrogenase 5 family, member A1

Calculated MW:

535 aa, 57 kDa

Observed MW:

51 kDa

Purification Method:

Protein G purification

CloneNo.:

1B9H10

Recommended Dilutions:

IF-P 1:50-1:500

IF/ICC 1:50-1:500

Excitation/Emission maximum wavelengths:

588 nm / 604 nm

Applications

Tested Applications:

IF/ICC, IF-P

Species Specificity:

human, mouse, rat, pig

Positive Controls:

IF-P : human liver cancer tissue,

IF/ICC : HepG2 cells,

Storage

Storage:

Store at -20°C. Avoid exposure to light. Stable for one year after shipment.

Storage Buffer:

PBS with 50% Glycerol, 0.05% Proclin300, 0.5% BSA, pH 7.3.

Aliquoting is unnecessary for -20°C storage

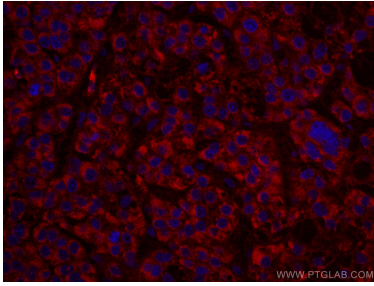
For technical support and original validation data for this product please contact:

T: 1 (888) 4PTGLAB (1-888-478-4522) (toll free in USA), or 1(312) 455-8498 (outside USA)

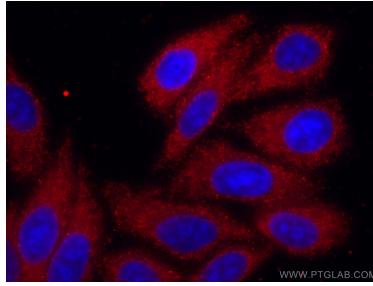
E: proteintech@ptglab.com
W: ptglab.com

This product is exclusively available under Proteintech Group brand and is not available to purchase from any other manufacturer.

Selected Validation Data



Immunofluorescent analysis of (4% PFA) fixed human liver cancer tissue using CoraLite®594 ALDH5A1 antibody (CL594-67347, Clone: 1B9H10) at dilution of 1:200. DAPI (blue).



Immunofluorescent analysis of (-20°C Methanol) fixed HepG2 cells using CoraLite®594 ALDH5A1 antibody (CL594-67347, Clone: 1B9H10) at dilution of 1:200. DAPI (blue).