

For Research Use Only

CoraLite® Plus 594-conjugated ZG16 Monoclonal antibody

Catalog Number: CL594-67389



Basic Information

Catalog Number: CL594-67389	GenBank Accession Number: BC029149	Purification Method: Protein G purification
Size: 100ul , Concentration: 1000 ug/ml by Nanodrop;	GeneID (NCBI): 653808	CloneNo.: 1A7B9
Source: Mouse	UNIPROT ID: O60844	Recommended Dilutions: IF-P 1:50-1:500
Isotype: IgG1	Full Name: zymogen granule protein 16 homolog (rat)	Excitation/Emission maxima wavelengths: 594 nm / 615 nm
Immunogen Catalog Number: AG11332	Calculated MW: 167 aa, 18 kDa	
	Observed MW: 16 kDa	

Applications

Tested Applications: IF-P	Positive Controls: IF-P: mouse small intestine tissue,
Species Specificity: Human, mouse, pig, rat	

Background Information

Zymogen granule protein 16 (ZG16) has a Jacalin-like lectin domain, which is mainly expressed by mucus-secreting cells, including goblet cells in the intestine. It's reported that ZG16 expression was significantly decreased in colorectal cancer compared to normal tissue. ZG16 gene expression and copy number variations (CNV) were associated with multiple molecular and clinicopathological features of CRC including MSI, MLH1 silencing and so on. It's found that ZG16 is negatively correlated with lymphatic invasive and distant metastasis. Besides, overexpression of ZG16 blocks PD-L1 expression in colorectal cancer, and promotes NK cells survival and proliferation. Very importantly, ZG16 suppresses colorectal tumor growth via the immune system. (PMID: 33360840, 21893569)

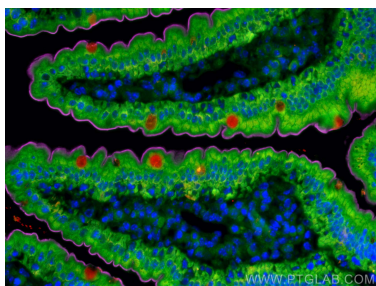
Storage

Storage:
Store at -20°C. Avoid exposure to light. Stable for one year after shipment.
Storage Buffer:
PBS with 50% Glycerol, 0.05% Proclin300, 0.5% BSA, pH 7.3.
Aliquoting is unnecessary for -20°C storage

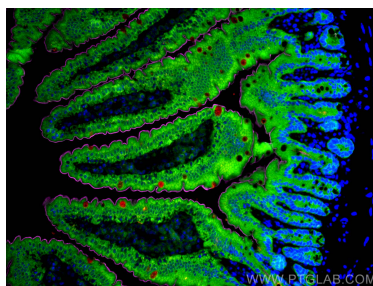
For technical support and original validation data for this product please contact:
T: 1 (888) 4PTGLAB (1-888-478-4522) (toll free in USA), or 1(312) 455-8498 (outside USA)
E: proteintech@ptglab.com
W: ptglab.com

This product is exclusively available under Proteintech Group brand and is not available to purchase from any other manufacturer.

Selected Validation Data



Immunofluorescent analysis of (4% PFA) fixed mouse small intestine tissue using CoraLite® Plus 594 ZG16 antibody (CL594-67389, Clone: 1A7B9) at dilution of 1:100, CoraLite® Plus 488 PIQR antibody (CL488-22024, green), Villin antibody (16488-1-AP, Magenta).



Immunofluorescent analysis of (4% PFA) fixed mouse small intestine tissue using CoraLite® Plus 594 ZG16 antibody (CL594-67389, Clone: 1A7B9) at dilution of 1:100, CoraLite® Plus 488 PIQR antibody (CL488-22024, green), Villin antibody (16488-1-AP, Magenta).