

For Research Use Only

# CoraLite®594-conjugated SEC24D Monoclonal antibody



Catalog Number:CL594-67409

## Basic Information

|   |  |   |
|---|--|---|
| <b>Catalog Number:</b><br>CL594-67409                             | <b>GenBank Accession Number:</b><br>BC035761                   | <b>Purification Method:</b><br>Protein A purification                 |
| <b>Size:</b><br>100ul , Concentration: 1000 µg/ml by<br>Nanodrop; | <b>GeneID (NCBI):</b><br>9871                                  | <b>CloneNo.:</b><br>3G5G9   |
| <b>Source:</b><br>Mouse   | <b>Full Name:</b><br>SEC24 family, member D (S.<br>cerevisiae) | <b>Recommended Dilutions:</b><br>IF 1:50-1:500                        |
| <b>Isotype:</b><br>IgG2a  | <b>Calculated MW:</b><br>1033 aa, 113 kDa                      | <b>Excitation/Emission maxima<br/>wavelengths:</b><br>593 nm / 614 nm |
| <b>Immunogen Catalog Number:</b><br>AG4657                        | <b>Observed MW:</b><br>113 kDa                                 |   |

## Applications

|                                      |  |
|--------------------------------------|--|
| <b>Tested Applications:</b><br>IF    | <b>Positive Controls:</b><br>IF : HepG2 cells, |
| <b>Species Specificity:</b><br>Human |  |

## Background Information

COPII-coated vesicles mediate anterograde transport from the ER to the Golgi apparatus. COPII is composed of three parts: two coat protein complexes (Sec23/24 complex and Sec13/31 complex) and one small GTP-binding protein, Sar1 (PMID: 9568718). Sec24 subunit of the coat complex has been implicated in cargo recognition (PMID: 17316621). In mammal cells there are four Sec24 isoforms, termed Sec24A, Sec24B, Sec24C, and Sec24D (PMID: 10329445).

## Storage

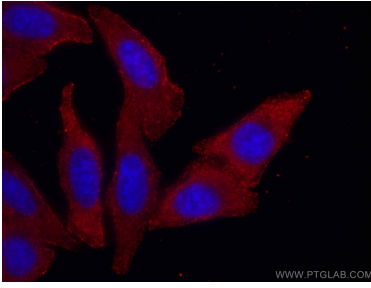
**Storage:**  
Store at -20°C. Avoid exposure to light.  
**Storage Buffer:**  
PBS with 50% Glycerol, 0.05% Proclin300, 0.5% BSA, pH 7.3.  
Aliquoting is unnecessary for -20°C storage

\*\*\* 20ul sizes contain 0.1% BSA

For technical support and original validation data for this product please contact:  
T: 1 (888) 4PTGLAB (1-888-478-4522) (toll free in USA), or 1(312) 455-8498 (outside USA)  
E: proteintech@ptglab.com  
W: ptglab.com

This product is exclusively available under Proteintech Group brand and is not available to purchase from any other manufacturer.

## Selected Validation Data



Immunofluorescent analysis of (-20°C Methanol) fixed HepG2 cells using CoraLite@594 SEC24D antibody (CL594-67409, Clone: 3G5G9 ) at dilution of 1:100. DAPI (blue).