

For Research Use Only

# CoraLite®594-conjugated TTPA Monoclonal antibody



Catalog Number:CL594-67431

## Basic Information

<b>Catalog Number:</b> CL594-67431	<b>GenBank Accession Number:</b> BC058000	<b>Purification Method:</b> Protein A purification
<b>Size:</b> 100ul , Concentration: 1000 µg/ml by Nanodrop;	<b>GeneID (NCBI):</b> 7274	<b>CloneNo.:</b> 3E7D10
<b>Source:</b> Mouse	<b>Full Name:</b> tocopherol (alpha) transfer protein	<b>Recommended Dilutions:</b> IF 1:50-1:500
<b>Isotype:</b> IgG2b	<b>Calculated MW:</b> 32 kDa	<b>Excitation/Emission maxima wavelengths:</b> 593 nm / 614 nm
<b>Immunogen Catalog Number:</b> AG13587	<b>Observed MW:</b> 32 kDa	

## Applications

**Tested Applications:**  
IF

**Species Specificity:**  
Human, Mouse, Rat, Pig

**Positive Controls:**  
IF : human liver cancer tissue,

## Background Information

### Storage

**Storage:**  
Store at -20°C. Avoid exposure to light.

**Storage Buffer:**  
PBS with 50% Glycerol, 0.05% Proclin300, 0.5% BSA, pH 7.3.

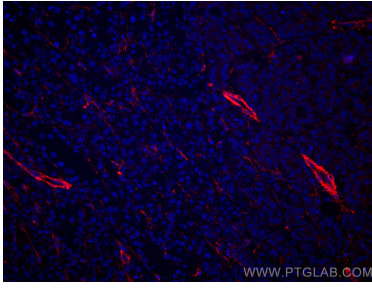
Aliquoting is unnecessary for -20°C storage

\*\*\* 20ul sizes contain 0.1% BSA

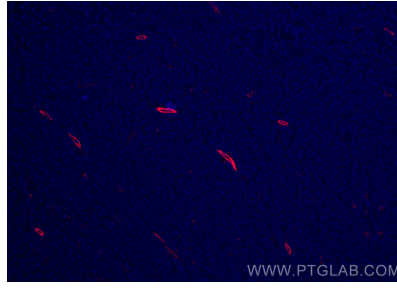
For technical support and original validation data for this product please contact:  
T: 1 (888) 4PTGLAB (1-888-478-4522) (toll free in USA), or 1(312) 455-8498 (outside USA)      E: proteintech@ptglab.com  
W: ptglab.com

This product is exclusively available under Proteintech Group brand and is not available to purchase from any other manufacturer.

## Selected Validation Data



Immunofluorescent analysis of (4% PFA) fixed human liver cancer tissue using CoraLite®594 TTPA antibody (CL594-67431, Clone: 3E7D10) at dilution of 1:200.



Immunofluorescent analysis of (4% PFA) fixed human liver cancer tissue using CoraLite®594 TTPA antibody (CL594-67431, Clone: 3E7D10) at dilution of 1:200.