

For Research Use Only

# CoraLite®594-conjugated PPM1D Monoclonal antibody



Catalog Number:CL594-67440

## Basic Information

<b>Catalog Number:</b> CL594-67440	<b>GenBank Accession Number:</b> BC060877	<b>Purification Method:</b> Protein G purification
<b>Size:</b> 100ul , Concentration: 911 µg/ml by Nanodrop;	<b>GeneID (NCBI):</b> 8493	<b>CloneNo.:</b> 2D6D5
<b>Source:</b> Mouse	<b>Full Name:</b> protein phosphatase 1D magnesium- dependent, delta isoform	<b>Recommended Dilutions:</b> IF 1:50-1:500
<b>Isotype:</b> IgG1	<b>Observed MW:</b> 67 kDa, 47 kDa	<b>Excitation/Emission maxima wavelengths:</b> 593 nm / 614 nm
<b>Immunogen Catalog Number:</b> AG24761		

## Applications

<b>Tested Applications:</b> IF	<b>Positive Controls:</b> IF : HepG2 cells,
<b>Species Specificity:</b> Human	

## Background Information

### Storage

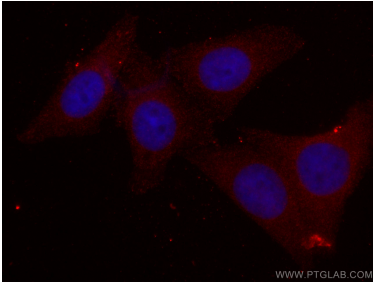
**Storage:**  
Store at -20°C. Avoid exposure to light.  
**Storage Buffer:**  
PBS with 50% Glycerol, 0.05% Proclin300, 0.5% BSA, pH 7.3.  
Aliquoting is unnecessary for -20°C storage

\*\*\* 20ul sizes contain 0.1% BSA

For technical support and original validation data for this product please contact:  
T: 1 (888) 4PTGLAB (1-888-478-4522) (toll free in USA), or 1(312) 455-8498 (outside USA) E: [proteintech@ptglab.com](mailto:proteintech@ptglab.com) W: [ptglab.com](http://ptglab.com)

This product is exclusively available under Proteintech Group brand and is not available to purchase from any other manufacturer.

## Selected Validation Data



Immunofluorescent analysis of (4% PFA) fixed HepG2 cells using CoraLite®594-conjugated PPM1D antibody (CL594-67440, Clone: 2D6D5) at dilution of 1:100.