

For Research Use Only

CoraLite®594-conjugated BDH1 Monoclonal antibody

Catalog Number: CL594-67448

Featured Product



Basic Information

Catalog Number:

CL594-67448

Size:

100ul , Concentration: 1000 ug/ml by Nanodrop;

Source:

Mouse

Isotype:

IgG1

Immunogen Catalog Number:

AG7864

GenBank Accession Number:

BC005844

GeneID (NCBI):

622

UNIPROT ID:

Q02338

Full Name:

3-hydroxybutyrate dehydrogenase, type 1

Calculated MW:

38 kDa

Observed MW:

31 kDa

Purification Method:

Protein G purification

CloneNo.:

2C3D4

Recommended Dilutions:

IF-P 1:50-1:500

Excitation/Emission maxima

wavelengths:

588 nm / 604 nm

Applications

Tested Applications:

IF-P

Species Specificity:

Human, Mouse, Rat, Pig

Positive Controls:

IF-P: mouse liver tissue,

Background Information

BDH1 (3-hydroxybutyrate dehydrogenase, type 1) is a 343 amino acid protein that localizes to the mitochondrial matrix and belongs to the short-chain dehydrogenases/reductases (SDR) family. The deduced 343 amino acid protein contains a 46 residue leader peptide, which is cleaved to produce the mature form. It is a lipid-requiring mitochondrial enzyme with a specific requirement of phosphatidylcholine (PC).

Storage

Storage:

Store at -20°C. Avoid exposure to light. Stable for one year after shipment.

Storage Buffer:

PBS with 50% Glycerol, 0.05% Proclin300, 0.5% BSA, pH 7.3.

Aliquoting is unnecessary for -20°C storage

For technical support and original validation data for this product please contact:

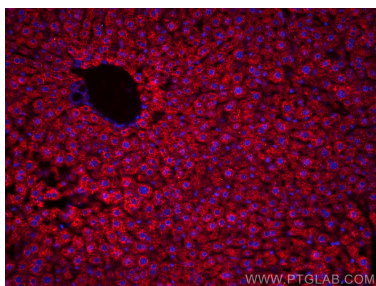
T: 1 (888) 4PTGLAB (1-888-478-4522) (toll free in USA), or 1(312) 455-8498 (outside USA)

E: proteintech@ptglab.com

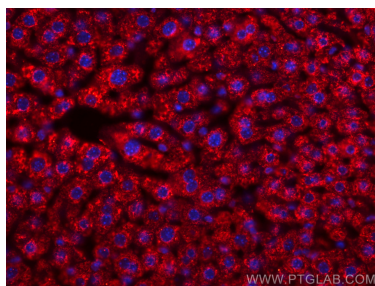
W: ptglab.com

This product is exclusively available under Proteintech Group brand and is not available to purchase from any other manufacturer.

Selected Validation Data



Immunofluorescent analysis of (4% PFA) fixed mouse liver tissue using CoraLite®594 BDH1 antibody (CL594-67448, Clone: 2C3D4) at dilution of 1:200.



Immunofluorescent analysis of (4% PFA) fixed mouse liver tissue using CoraLite®594 BDH1 antibody (CL594-67448, Clone: 2C3D4) at dilution of 1:200.