

For Research Use Only

CoraLite®594-conjugated PLCL2 Monoclonal antibody

Catalog Number:CL594-67471



Basic Information

Catalog Number: CL594-67471	GenBank Accession Number: BC036392	Purification Method: Protein G purification
Size: 100ul , Concentration: 1000 ug/ml by Nanodrop;	GeneID (NCBI): 23228	CloneNo.: 1C8A4
Source: Mouse	UNIPROT ID: Q9UPRO	Recommended Dilutions: IF/ICC 1:50-1:500
Isotype: IgG1	Full Name: phospholipase C-like 2	Excitation/Emission maxima wavelengths: 588 nm / 604 nm
Immunogen Catalog Number: AG11461	Calculated MW: 126 kDa	
	Observed MW: 126 kDa	

Applications

Tested Applications: IF/ICC	Positive Controls: IF/ICC : HepG2 cells,
Species Specificity: Human, Rat, Mouse, Pig	

Background Information

PLCL2, a novel phospholipase C-like protein, is expressed in lymphocytes and platelets. The expression of PLCL2 is associated with the proliferation of mature B cells in the immune system. PLCL2 is a new susceptibility loci for myocardial infarction. It has been shown that PLCL2 plays a key role in the pathogenesis of atherosclerosis and systemic sclerosis. There are three isoforms of PLCL2 protein and 67471-1-Ig antibody detects the 126 kDa band in SDS-PAGE. (PMID: 24916648, 25880423)

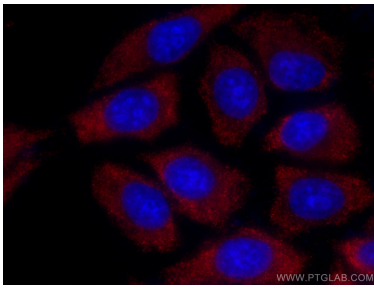
Storage

Storage:
Store at -20°C. Avoid exposure to light. Stable for one year after shipment.
Storage Buffer:
PBS with 50% Glycerol, 0.05% Proclin300, 0.5% BSA, pH 7.3.
Aliquoting is unnecessary for -20°C storage

For technical support and original validation data for this product please contact:
T: 1 (888) 4PTGLAB (1-888-478-4522) (toll free in USA), or 1(312) 455-8498 (outside USA)
E: proteintech@ptglab.com
W: ptglab.com

This product is exclusively available under Proteintech Group brand and is not available to purchase from any other manufacturer.

Selected Validation Data



Immunofluorescent analysis of (-20°C Methanol) fixed HepG2 cells using CoraLite®594 PLCL2 antibody (CL594-67471, Clone: 1C8A4) at dilution of 1:200.