

For Research Use Only

CoraLite®594-conjugated SLC22A7 Monoclonal antibody



Catalog Number:CL594-67479

Basic Information

Catalog Number: CL594-67479	GenBank Accession Number: BC033805	Purification Method: Protein A purification
Size: 100ul , Concentration: 1000 µg/ml by Nanodrop;	GeneID (NCBI): 10864	CloneNo.: 3D3C3
Source: Mouse	Full Name: solute carrier family 22 (organic anion transporter), member 7	Excitation/Emission maxima wavelengths: 588 nm / 604 nm
Isotype: IgG2a	Calculated MW: 60 kDa	
Immunogen Catalog Number: AG25234	Observed MW: 60 kDa	

Applications

Tested Applications:
FC (Intra)

Species Specificity:
Human

Background Information

Storage

Storage:
Store at -20°C. Avoid exposure to light. Stable for one year after shipment.

Storage Buffer:
PBS with 50% Glycerol, 0.05% Proclin300, 0.5% BSA, pH 7.3.

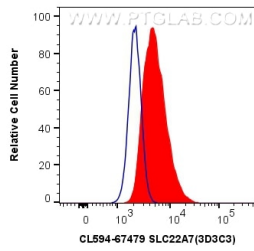
Aliquoting is unnecessary for -20°C storage

*** 20ul sizes contain 0.1% BSA

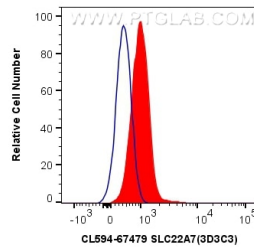
For technical support and original validation data for this product please contact:
T: 1 (888) 4PTGLAB (1-888-478-4522) (toll free in USA), or 1(312) 455-8498 (outside USA) E: proteintech@ptglab.com W: ptglab.com

This product is exclusively available under Proteintech Group brand and is not available to purchase from any other manufacturer.

Selected Validation Data



1X10⁶ HEK-293 cells were intracellularly stained with 0.4 ug CoraLite®594 Anti-Human SLC22A7 (CL594-67479, Clone:3D3C3) (red), or 0.4 ug Mouse IgG2a Isotype Control (CL594-66360-2, Clone: K11A1B2A2) (blue). Cells were fixed with 4% PFA and permeabilized with Flow Cytometry Perm Buffer (PF00011-C).



1X10⁶ HEK-293 cells were surface stained with 0.4 ug CoraLite®594 Anti-Human SLC22A7 (CL594-67479, Clone:3D3C3) (red), or 0.4 ug CoraLite®594-conjugated Mouse IgG2a isotype control Mouse McAb (CL594-66360-2, Clone: 11A1B2) (blue). Cells were not fixed.