

For Research Use Only

CoraLite®594-conjugated RAN Monoclonal antibody

Catalog Number:CL594-67500



Basic Information

Catalog Number:

CL594-67500

Size:

100ul , Concentration: 1000 ug/ml by
Nanodrop;

Source:

Mouse

Isotype:

IgG2b

Immunogen Catalog Number:

AG30034

GenBank Accession Number:

BC004272

GeneID (NCBI):

5901

UNIPROT ID:

P62826

Full Name:

RAN, member RAS oncogene family

Calculated MW:

25 kDa

Observed MW:

24 kDa

Purification Method:

Protein A purification

CloneNo.:

1B11E1

Excitation/Emission maxima
wavelengths:

588 nm / 604 nm

Applications

Tested Applications:

FC (Intra)

Species Specificity:

human

Background Information

RAN is also named as ARA24, Ras-like protein TC4 and GTPase Ran, and belongs to the small GTPase superfamily family and the Ran family. GTPase Ran switches between a cytoplasmic GDP- and a nuclear GTP-bound state by nucleotide exchange and GTP hydrolysis (PMID:7819259, PMID:32528950). RAN (GTP-bound form) triggers microtubule assembly at mitotic chromosomes and is required for normal mitotic spindle assembly and chromosome segregation (PMID:10408446, PMID:29040603, PMID:32528950).

Storage

Storage:

Store at -20°C. Avoid exposure to light. Stable for one year after shipment.

Storage Buffer:

PBS with 50% Glycerol, 0.05% Proclin300, 0.5% BSA, pH 7.3.

Aliquoting is unnecessary for -20°C storage

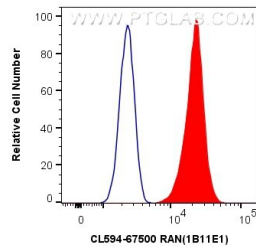
For technical support and original validation data for this product please contact:

T: 1 (888) 4PTGLAB (1-888-478-4522) (toll free
in USA), or 1(312) 455-8498 (outside USA)

E: proteintech@ptglab.com
W: ptglab.com

This product is exclusively available under Proteintech Group brand and is not available to purchase from any other manufacturer.

Selected Validation Data



1X10⁶ HeLa cells were intracellularly stained with 0.4 ug Coralite®594 Anti-Human RAN (CL594-67500, Clone:1B11E1) (red), or 0.4 ug Control Antibody. Cells were fixed with 4% PFA and permeabilized with Flow Cytometry Perm Buffer (PF00011-C).