

For Research Use Only

# CoraLite®594-conjugated RAB2A Monoclonal antibody



Catalog Number:CL594-67501

## Basic Information

|  |  |   |
|--|--|---|
| <b>Catalog Number:</b><br>CL594-67501                          | <b>GenBank Accession Number:</b><br>BC008929           | <b>Purification Method:</b><br>Protein A purification             |
| <b>Size:</b><br>100ul , Concentration: 1000 µg/ml by Nanodrop; | <b>GeneID (NCBI):</b><br>5862                          | <b>CloneNo.:</b><br>3E1B10  |
| <b>Source:</b><br>Mouse  | <b>UNIPROT ID:</b><br>P61019                           | <b>Recommended Dilutions:</b><br>IF-P 1:50-1:500                  |
| <b>Isotype:</b><br>IgG2b                                       | <b>Full Name:</b><br>RAB2A, member RAS oncogene family | <b>Excitation/Emission maxima wavelengths:</b><br>588 nm / 604 nm |
| <b>Immunogen Catalog Number:</b><br>AG7939                     | <b>Calculated MW:</b><br>24 kDa                        |   |
|  | <b>Observed MW:</b><br>21 kDa                          |   |

## Applications

|  |   |
|--|---|
| <b>Tested Applications:</b><br>IF-P, FC (Intra)  | <b>Positive Controls:</b><br>IF-P : mouse brain tissue, |
| <b>Species Specificity:</b><br>human, mouse, rat |   |

## Background Information

The protein belongs to the Rab family, members of which are small molecular weight guanosine triphosphatases (GTPases) that contain highly conserved domains involved in GTP binding and hydrolysis. The Rabs are membrane-bound proteins, involved in vesicular fusion and trafficking. This protein is a resident of pre-Golgi intermediates, and is required for protein transport from the endoplasmic reticulum (ER) to the Golgi complex.

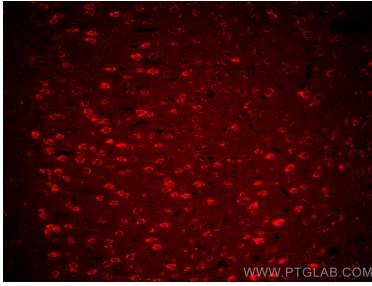
## Storage

**Storage:**  
Store at -20°C. Avoid exposure to light. Stable for one year after shipment.  
**Storage Buffer:**  
PBS with 50% Glycerol, 0.05% Proclin300, 0.5% BSA, pH 7.3.  
**Aliquoting is unnecessary for -20°C storage**

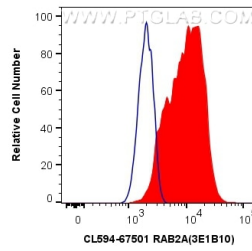
For technical support and original validation data for this product please contact:  
T: 1 (888) 4PTGLAB (1-888-478-4522) (toll free in USA), or 1(312) 455-8498 (outside USA)  
E: [proteintech@ptglab.com](mailto:proteintech@ptglab.com)  
W: [ptglab.com](http://ptglab.com)

This product is exclusively available under Proteintech Group brand and is not available to purchase from any other manufacturer.

## Selected Validation Data



Immunofluorescent analysis of (4% PFA) fixed mouse brain tissue using CoraLite® 594 RAB2A antibody (CL594-67501, Clone: 3E1B10) at dilution of 1:200.



1X10<sup>6</sup> HeLa cells were intracellularly stained with 0.4 ug CoraLite® 594 Anti-Human RAB2A (CL594-67501, Clone: 3E1B10) (red), or 0.4 ug Control Antibody. Cells were fixed with 4% PFA and permeabilized with Flow Cytometry Perm Buffer (PF00011-C).