

For Research Use Only

CoraLite®594-conjugated TPI1 Monoclonal antibody

Catalog Number:CL594-67515

Featured Product



Basic Information

Catalog Number:

CL594-67515

Size:

100ul , Concentration: 1000 ug/ml by
Nanodrop;

Source:

Mouse

Isotype:

IgG1

Immunogen Catalog Number:

AG16653

GenBank Accession Number:

BC007086

GeneID (NCBI):

7167

UNIPROT ID:

P60174

Full Name:

triosephosphate isomerase 1

Calculated MW:

27 kDa

Observed MW:

27 kDa

Purification Method:

Protein G purification

CloneNo.:

2E7E5

Recommended Dilutions:

IF/ICC 1:50-1:500

Excitation/Emission maxima
wavelengths:

588 nm / 604 nm

Applications

Tested Applications:

IF/ICC

Species Specificity:

Human, Mouse, Rat

Positive Controls:

IF/ICC : HeLa cells,

Background Information

TPI1(Triosephosphate isomerase) is also named as TIM, TPI and belongs to the triosephosphate isomerase family. It is a key enzyme in cell metabolism that controls the glycolytic flow and energy production through the interconversion of dihydroxyacetone phosphate (DHAP) and D-glyceraldehyde 3-phosphate (G3P)(PMID:19251756). Defects in TPI1 are the cause of triosephosphate isomerase deficiency (TPI deficiency). It can exist as a homodimer(PMID:18562316).

Storage

Storage:

Store at -20°C. Avoid exposure to light. Stable for one year after shipment.

Storage Buffer:

PBS with 50% Glycerol, 0.05% Proclin300, 0.5% BSA, pH 7.3.

Aliquoting is unnecessary for -20°C storage

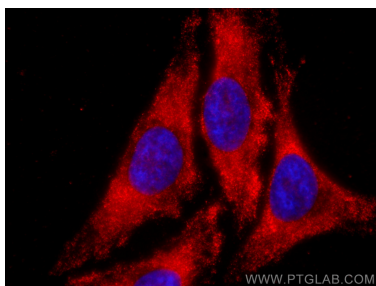
For technical support and original validation data for this product please contact:

T: 1 (888) 4PTGLAB (1-888-478-4522) (toll free
in USA), or 1(312) 455-8498 (outside USA)

E: proteintech@ptglab.com
W: ptglab.com

This product is exclusively available under Proteintech Group brand and is not available to purchase from any other manufacturer.

Selected Validation Data



Immunofluorescent analysis of (-20°C Methanol)
fixed HeLa cells using CoraLite®594 TPI1 antibody
(CL594-67515, Clone: 2E7E5) at dilution of 1:200.