

For Research Use Only

CoraLite®594-conjugated CCT8 Monoclonal antibody



Catalog Number:CL594-67539

Basic Information

Catalog Number: CL594-67539	GenBank Accession Number: BC012584	Purification Method: Protein A purification
Size: 100ul , Concentration: 1000 µg/ml by Nanodrop;	GeneID (NCBI): 10694	CloneNo.: 1A7C3
Source: Mouse	Full Name: chaperonin containing TCP1, subunit 8 (theta)	Recommended Dilutions: IF 1:50-1:500
Isotype: IgG2a	Calculated MW: 548 aa, 60 kDa	Excitation/Emission maxima wavelengths: 588 nm / 604 nm
Immunogen Catalog Number: AG30082	Observed MW: 60 kDa	

Applications

Tested Applications: FC (Intra), IF	Positive Controls: IF : MCF-7 cells,
Species Specificity: Human, mouse, rat	

Background Information

CCT8, also named as C21orf112, CCTQ, KIAA0002, CCT-theta, TCP-1-theta and NY-REN-15, belongs to the TCP-1 chaperonin family. It is a molecular chaperone; assists the folding of proteins upon ATP hydrolysis. As part of the BBS/CCT complex, CCT8 may play a role in the assembly of BBSome, a complex involved in ciliogenesis regulating transports vesicles to the cilia. Dysregulation of CCT8 has been linked to proliferation and invasion of tumors.

Storage

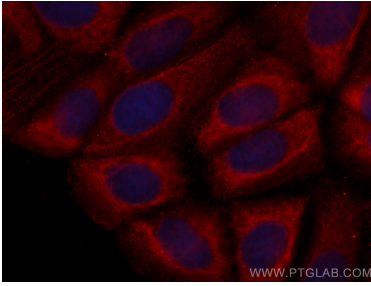
Storage:
Store at -20°C. Avoid exposure to light. Stable for one year after shipment.
Storage Buffer:
PBS with 50% Glycerol, 0.05% Proclin300, 0.5% BSA, pH 7.3.
Aliquoting is unnecessary for -20°C storage

*** 20ul sizes contain 0.1% BSA

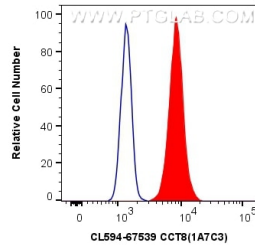
For technical support and original validation data for this product please contact:
T: 1 (888) 4PTGLAB (1-888-478-4522) (toll free in USA), or 1(312) 455-8498 (outside USA)
E: proteintech@ptglab.com
W: ptglab.com

This product is exclusively available under Proteintech Group brand and is not available to purchase from any other manufacturer.

Selected Validation Data



Immunofluorescent analysis of (-20°C Methanol) fixed MCF-7 cells using CoraLite®594 CCT8 antibody (CL594-67539, Clone: 1A7C3) at dilution of 1:200.



1X10⁶ MCF-7 cells were intracellularly stained with 0.4 ug CoraLite®594 Anti-Human CCT8 (CL594-67539, Clone:1A7C3) (red), or 0.4 ug Control Antibody. Cells were fixed with 4% PFA and permeabilized with Flow Cytometry Perm Buffer (PF00011-C).