

For Research Use Only

CoraLite®594-conjugated IPO4 Monoclonal antibody

Catalog Number:CL594-67549



Basic Information

Catalog Number: CL594-67549	GenBank Accession Number: BC003690	Purification Method: Protein G purification
Size: 100ul , Concentration: 1000 ug/ml by Nanodrop;	GeneID (NCBI): 79711	CloneNo.: 2F3H2
Source: Mouse	UNIPROT ID: Q8TEX9	Recommended Dilutions: IF/ICC 1:50-1:500
Isotype: IgG1	Full Name: importin 4	Excitation/Emission maxima wavelengths: 588 nm / 604 nm
Immunogen Catalog Number: AG2281	Calculated MW: 1081 aa, 118 kDa	
	Observed MW: 120 kDa	

Applications

Tested Applications: IF/ICC	Positive Controls: IF/ICC : MCF-7 cells,
Species Specificity: Human	

Background Information

Importin-4 (IPO4) belongs to the importin β family which directs the cargo to pass through the nuclear pore complex via transient interaction with nucleoporins. IPO4 is responsible for transporting histones H3 and H4 into the nucleus for chromatin assembly. Recently IPO4 has been reported to contribute to gastric cancer progression and poor prognosis.

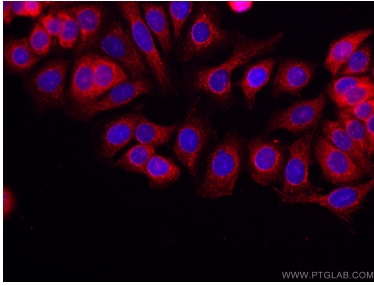
Storage

Storage:
Store at -20°C. Avoid exposure to light. Stable for one year after shipment.
Storage Buffer:
PBS with 50% Glycerol, 0.05% Proclin300, 0.5% BSA, pH 7.3.
Aliquoting is unnecessary for -20°C storage

For technical support and original validation data for this product please contact:
T: 1 (888) 4PTGLAB (1-888-478-4522) (toll free in USA), or 1(312) 455-8498 (outside USA)
E: proteintech@ptglab.com
W: ptglab.com

This product is exclusively available under Proteintech Group brand and is not available to purchase from any other manufacturer.

Selected Validation Data



Immunofluorescent analysis of (-20°C Ethanol) fixed MCF-7 cells using CoraLite®594 IPO4 antibody (CL594-67549, Clone: 2F3H2) at dilution of 1:100.