

For Research Use Only

# CoraLite®594-conjugated PICALM Monoclonal antibody



Catalog Number:CL594-67564

## Basic Information

<b>Catalog Number:</b> CL594-67564	<b>GenBank Accession Number:</b> BC064357	<b>Purification Method:</b> Protein G purification
<b>Size:</b> 100ul , Concentration: 1000 µg/ml by Nanodrop;	<b>GeneID (NCBI):</b> 8301	<b>CloneNo.:</b> 1F6G7
<b>Source:</b> Mouse	<b>Full Name:</b> phosphatidylinositol binding clathrin assembly protein	<b>Recommended Dilutions:</b> IF 1:50-1:500
<b>Isotype:</b> IgG1	<b>Calculated MW:</b> 71 kDa	<b>Excitation/Emission maxima wavelengths:</b> 588 nm / 604 nm
<b>Immunogen Catalog Number:</b> AG29512	<b>Observed MW:</b> 60-70 kDa	

## Applications

<b>Tested Applications:</b> FC (Intra), IF	<b>Positive Controls:</b> IF : HepG2 cells,
<b>Species Specificity:</b> Human, Mouse, Rat	

## Background Information

PICALM (Phosphatidyl Inositol Clathrin Assembly Lymphoid Myeloid protein) is a ubiquitously expressed protein that plays a role in clathrin-mediated endocytosis. PICALM also affects the internalization and trafficking of SNAREs and modulates macroautophagy. PICALM is a highly validated genetic risk factor for Alzheimer's disease (AD). The long isoform of human PICALM has 22 exons (encoding PICALML), while the short isoform lacks exon 14 (encoding PICALMS). (PMID: 33397371, PMID: 26075887, PMID: 26005850)

## Storage

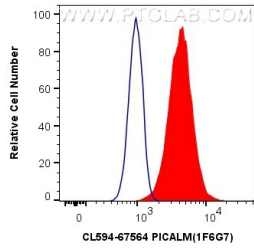
**Storage:**  
Store at -20°C. Avoid exposure to light. Stable for one year after shipment.  
**Storage Buffer:**  
PBS with 50% Glycerol, 0.05% Proclin300, 0.5% BSA, pH 7.3.  
Aliquoting is unnecessary for -20°C storage

\*\*\* 20ul sizes contain 0.1% BSA

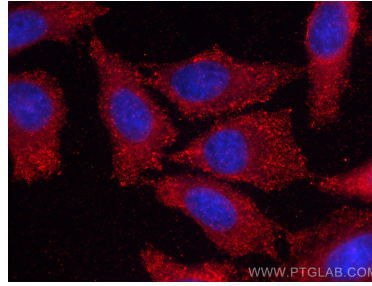
For technical support and original validation data for this product please contact:  
T: 1 (888) 4PTGLAB (1-888-478-4522) (toll free in USA), or 1(312) 455-8498 (outside USA) E: proteintech@ptglab.com W: ptglab.com

This product is exclusively available under Proteintech Group brand and is not available to purchase from any other manufacturer.

## Selected Validation Data



$1 \times 10^6$  HEK-293 cells were intracellularly stained with 0.4  $\mu$ g CoraLite®594 Anti-Human PICALM (CL594-67564, Clone:1F6G7) (red), or 0.4  $\mu$ g Control Antibody. Cells were fixed with 4% PFA and permeabilized with Flow Cytometry Perm Buffer (PF00011-C).



Immunofluorescent analysis of (-20°C Methanol) fixed HepG2 cells using CoraLite®594 PICALM antibody (CL594-67564, Clone: 1F6G7) at dilution of 1:200.