

For Research Use Only

CoraLite®594-conjugated PHGDH Monoclonal antibody

Catalog Number:CL594-67591



Basic Information

Catalog Number: CL594-67591	GenBank Accession Number: BC000303	Purification Method: Protein G purification
Size: 100ul , Concentration: 1000 ug/ml by Nanodrop;	GeneID (NCBI): 26227	CloneNo.: 1E8B8
Source: Mouse	UNIPROT ID: O43175	Recommended Dilutions: IF/ICC 1:50-1:500
Isotype: IgG1	Full Name: phosphoglycerate dehydrogenase	Excitation/Emission maxima wavelengths: 588 nm / 604 nm
Immunogen Catalog Number: AG6877	Calculated MW: 57 kDa	
	Observed MW: 57 kDa	

Applications

Tested Applications: IF/ICC	Positive Controls: IF/ICC : HeLa cells,
Species Specificity: human, mouse, rat	

Background Information

PHGDH(D-3-phosphoglycerate dehydrogenase) is also named as 3-PGDH, PGDH3 and belongs to the D-isomer specific 2-hydroxyacid dehydrogenase family. It catalyzes the transition of 3-phosphoglycerate into 3-phosphohydroxypyruvate, which is the first and rate-limiting step in the phosphorylated pathway of serine biosynthesis, using NAD⁺/NADH as a cofactor. 3-PGDH deficiency is a rare recessive inborn error in the biosynthesis of the amino acid L-serine characterized clinically by congenital microcephaly, psychomotor retardation, and intractable seizures(PMID:19235232).

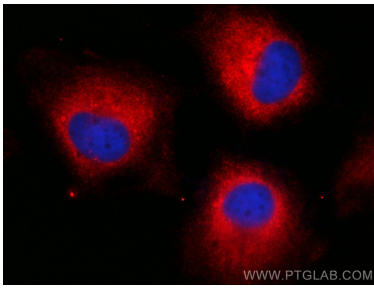
Storage

Storage:
Store at -20°C. Avoid exposure to light. Stable for one year after shipment.
Storage Buffer:
PBS with 50% Glycerol, 0.05% Proclin300, 0.5% BSA, pH 7.3.
Aliquoting is unnecessary for -20°C storage

For technical support and original validation data for this product please contact:
T: 1 (888) 4PTGLAB (1-888-478-4522) (toll free in USA), or 1(312) 455-8498 (outside USA)
E: proteintech@ptglab.com
W: ptglab.com

This product is exclusively available under Proteintech Group brand and is not available to purchase from any other manufacturer.

Selected Validation Data



Immunofluorescent analysis of (-20°C Ethanol) fixed HeLa cells using CoraLite®594 PHGDH antibody (CL594-67591, Clone: 1E888) at dilution of 1:200.